

WAAS
CH **99409**
W28A

APP CRS
277°

Rwy Idg
TDZE **129**
Apt Elev **135**

RNAV (GPS) RWY 28

TAPPAHANNOCK-ESSEX COUNTY (XSA)

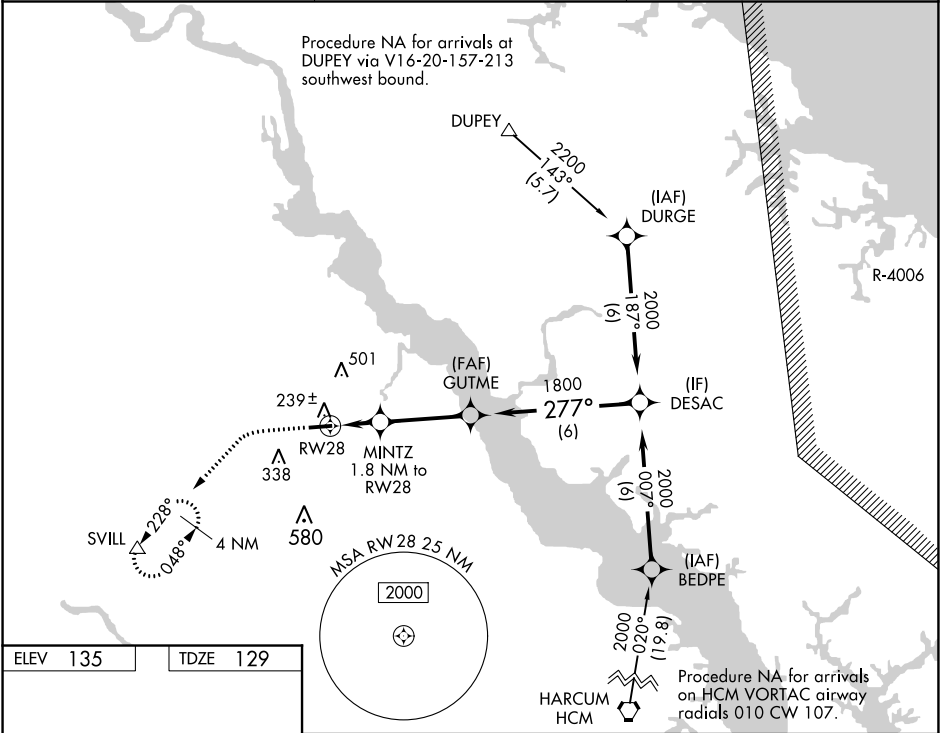
For uncompensated Baro-VNAV systems, LNAV/VNAV NA below -15°C (5°F) or above 54°C (130°F). DME/DME RNP-0.3 NA.

MISSED APPROACH: Climb to 600 then climbing left turn to 2000 direct SVILL and hold.

AWOS-3
125.775

POTOMAC APP CON
126.4 282.375

UNICOM
122.8 (CTAF) 0



600

2000

SVILL

*LNAV only.

MINTZ 1.8 NM to RW28

*1 NM to RW28

RW28

GUTME 1800

DESAC 2000

277° to RW28

277°

1800

740*

GP 3.00°

TCH 40

1 NM

0.8 NM

3.3 NM

6 NM

CATEGORY	A	B	C	D
LPV DA	379-1	250 (300-1)	NA	NA
LNAV/VNAV DA	402-1	273 (300-1)	NA	NA
LNAV MDA	500-1	371 (400-1)	NA	NA
<div>CIRCLING</div>	580-1 445 (500-1)	640-1 505 (600-1)	820-2 685 (700-2)	NA

REIL Rwy 10 and 28

MIRL Rwy 10-28 0