

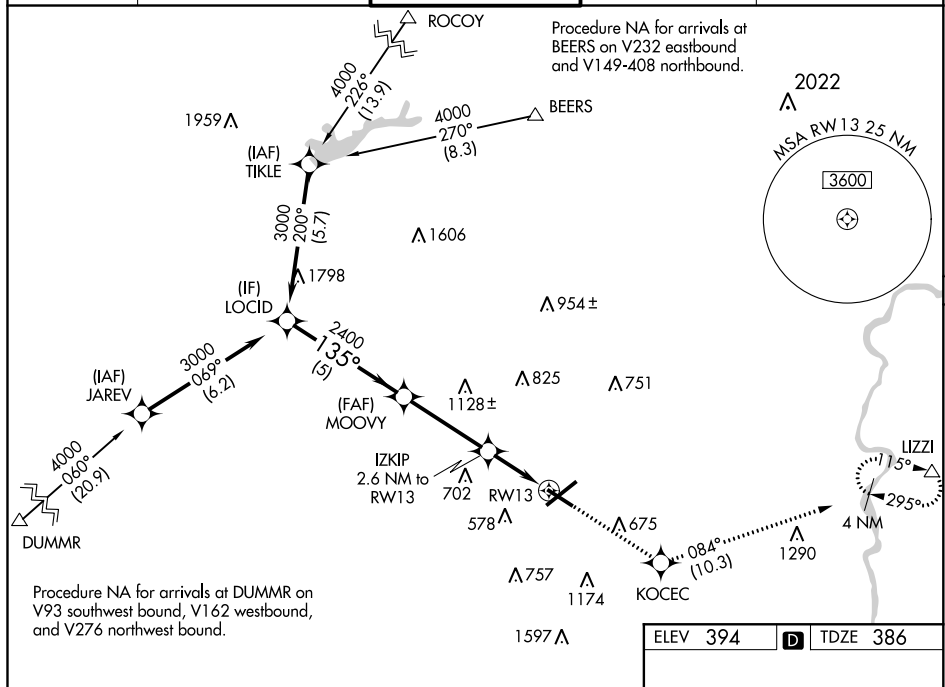
RNAV (GPS) RWY 13

LEHIGH VALLEY INTL (ABE)

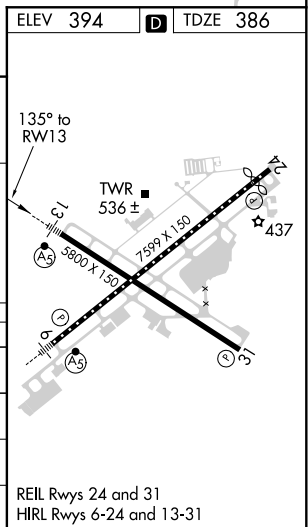
MALSR

MISSED APPROACH: Climb to 3000 direct KOCEC and on track 084° to LZZI and hold.

ATIS 126.975	ALLETOWN APP CON 119.65 124.45 351.8	ALLETOWN TOWER 120.5 257.95	GND CON 121.9 257.95	CLNC DEL 124.05 257.95
-----------------	---	--------------------------------	-------------------------	---------------------------



CATEGORY	A	B	C	D
LPV DA	586-½	200 (200-½)		
LNAV/VNAV DA	700-½	314 (400-½)		
LNAV MDA	800-½ 414 (500-½)		800-¾ 414 (500-¾)	
CIRCLING	900-1 506 (600-1)		1180-2¼ 786 (800-2¼)	1600-3 1206 (1300-3)



NE-4, 03 DEC 2020 to 31 DEC 2020