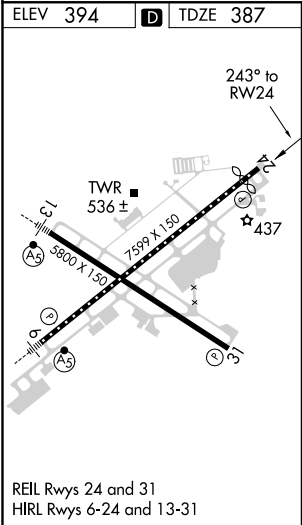
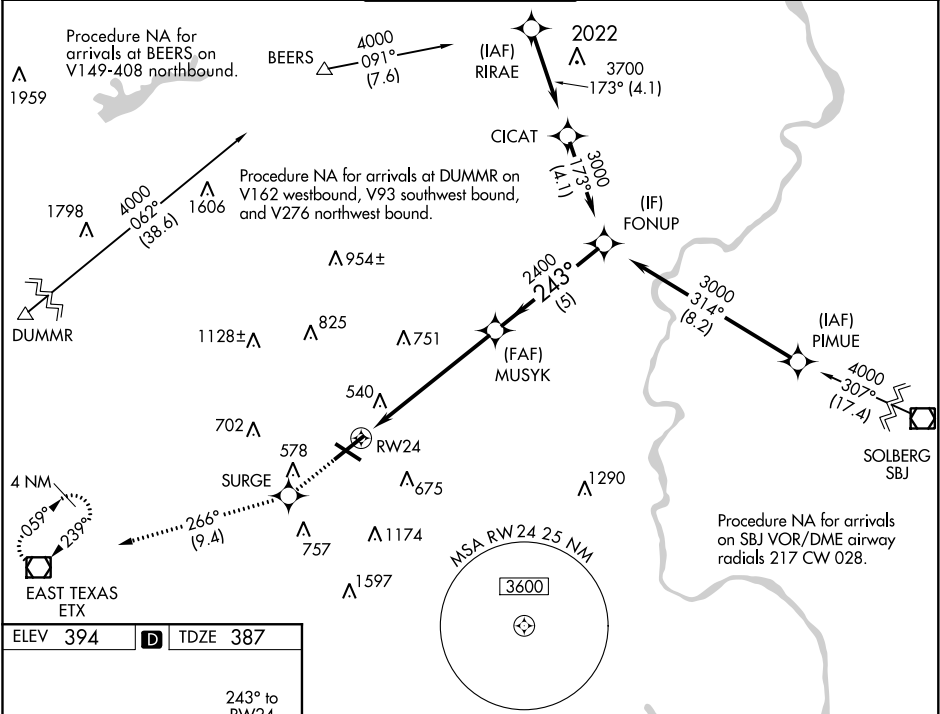


WAAS CH 40332 W24A	APP CRS 243°	Rwy Idg TDZE 387 Apt Elev 394	7089 387 394
--	------------------------	---	---

RNAV (GPS) RWY 24

LEHIGH VALLEY INTL (ABE)

RNP APCH.		MISSED APPROACH: Climb to 3000 direct SURGE and on track 266° to ETX VOR/DME and hold.		
▼ ▲ For uncompensated Baro-VNAV systems, LNAV/VNAV NA below -8°C (18°F) or above 54°C (130°F).				
ATIS 126.975	ALLENTOWN APP CON 119.65 124.45 351.8	ALLENTOWN TOWER 120.5 257.95	GND CON 121.9 257.95	CLNC DEL 124.05 257.95



3000 ↑		SURGE ✱		tr 266°		ETX ◻		VGSI and RNAV glidepath not coincident (VGSI Angle 3.00/TCH 60).	
*LNAV only.		*1.3 NM to RW24		MUSYK 2400		FONUP 3000			
RW24		1.3 NM		4.9 NM		5 NM		GP 3.00° TCH 55	
CATEGORY		A		B		C		D	
LPV DA		587/40		200 (200-¾)					
LNAV/ VNAV DA		783-1¼		396 (400-1¼)					
LNAV MDA		860/55 473 (500-1)		860-1⅓ 473 (500-1⅓)					
CIRCLING		900-1 506 (600-1)		1180-2¼ 786 (800-2¼)		1600-3 1206 (1300-3)			