

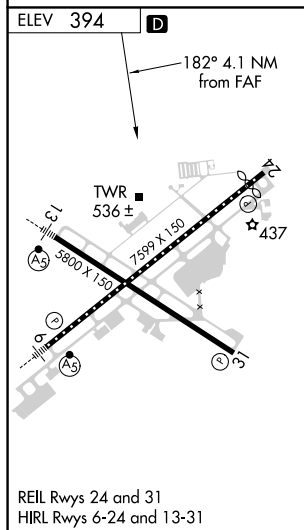
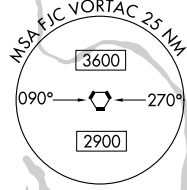
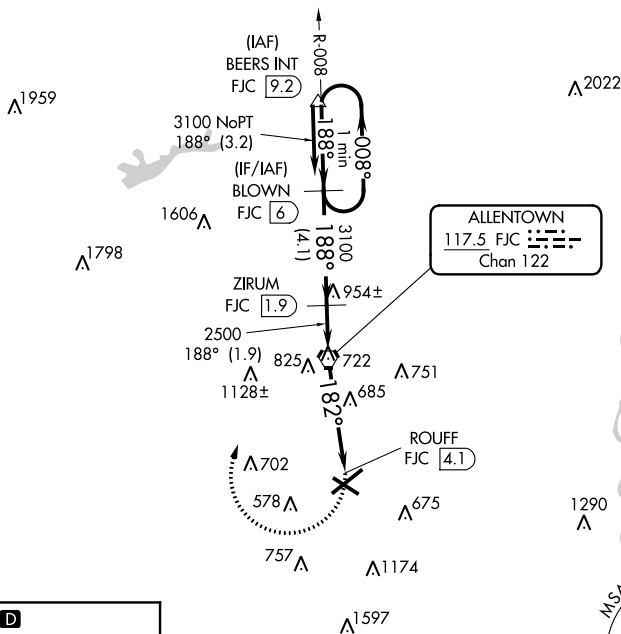
TACAN-C
LEHIGH VALLEY INTL (ABE)

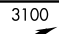
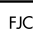
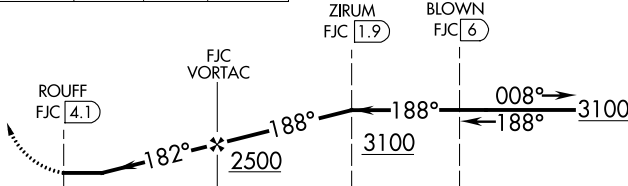
A NA

MISSED APPROACH: Climbing right turn to 3100
direct FJC VORTAC then via FJC R-008 to
BLOWN/6 DME and hold.

ATIS 126.975	ALLETOWN APP CON 119.65 124.45 351.8	ALLETOWN TOWER 120.5 257.95	GND CON 121.9 257.95	CLNC DEL 124.05 257.95
-----------------	-----------------------------------------	--------------------------------	-------------------------	---------------------------

Λ 2088



3100 	FJC 	FJC R-008	BLOWN FJC <u>6</u>	One Minute Holding Pattern
				
CATEGORY	A	B	C	D
C CIRCLING	940-1	546 (600-1)	1180-2¼ 786 (800-2¼)	1600-3 1206 (1300-3)