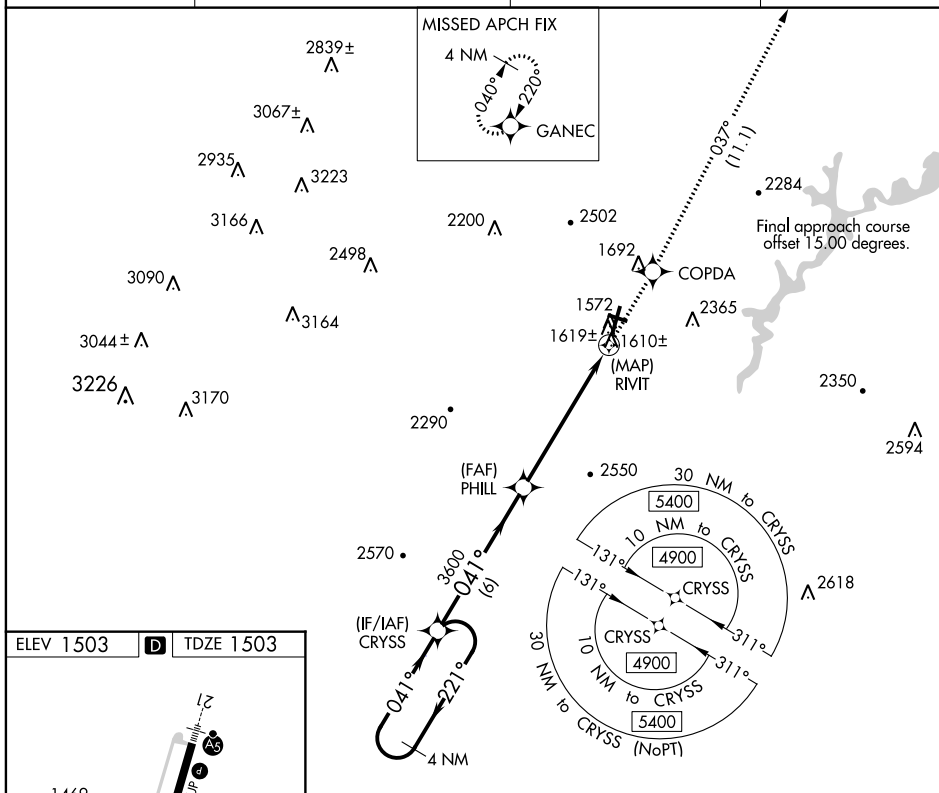


RNAV (GPS) Y RWY 3  
ALTOONA-BLAIR COUNTY (A00)

**▼** When local altimeter setting not received, use Bedford County altimeter setting, increase all MDA 100 feet. Increase LNAV and LP Cat C/D visibilities  $\frac{3}{8}$  SM and Circling Cat A  $\frac{1}{4}$  SM.  
**▲** Rwy 3, helicopter visibility reduction below  $\frac{3}{4}$  SM NA. Circling NA to Rwy's 12 and 30. VDP NA when using Bedford County altimeter setting.

**MISSED APPROACH:** Climb to 5000 direct COPDA on track 037° to GANEC and hold, continue climb-in-hold to 5000.

UNICOM  
123.0

- HIRL Rwy 3-21 **L**
- HIRL Rwy 12-30 **L**
- 3, 12, and 30 **L**

4 NM Holding Pattern 4900 ← 221° 041° →		CRYSS 041°		5000 PHILL		COPDA tr 037°		GANEV tr 037°	
3600 TCH 43 3.00°		0.6 NM to RIVIT RIVIT		0.6 NM 5.4 NM 0.6 0.5		0.6 NM to RIVIT RIVIT		0.6 NM 5.4 NM 0.6 0.5	
CATEGORY	A		B		C		D		
LP MDA	1860-1		357 (400-1)						
LNAV MDA	1880-1		377 (400-1)						
<b>C</b> CIRCLING	2240-1 737 (800-1)	2240-1½ 737 (800-1½)	2800-3 1297 (1300-3)	2840-3 1357 (1400-3)					

RNAV (GPS) Y RWY 3