

APP CRS  
211°

Rwy Idg  
TDZE  
Apt Elev

4501  
1958  
1987

RNAV (GPS) RWY 23

ELKINS-RANDOLPH COUNTY-JENNINGS RANDOLPH FIELD (EKN)

RNP APCH

⚠

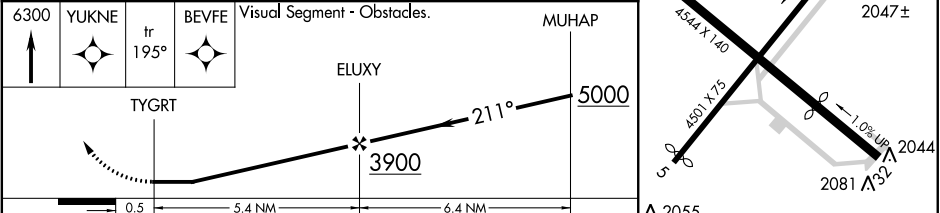
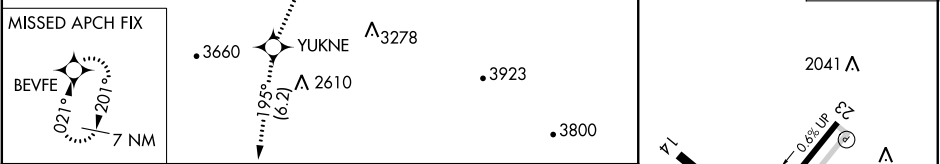
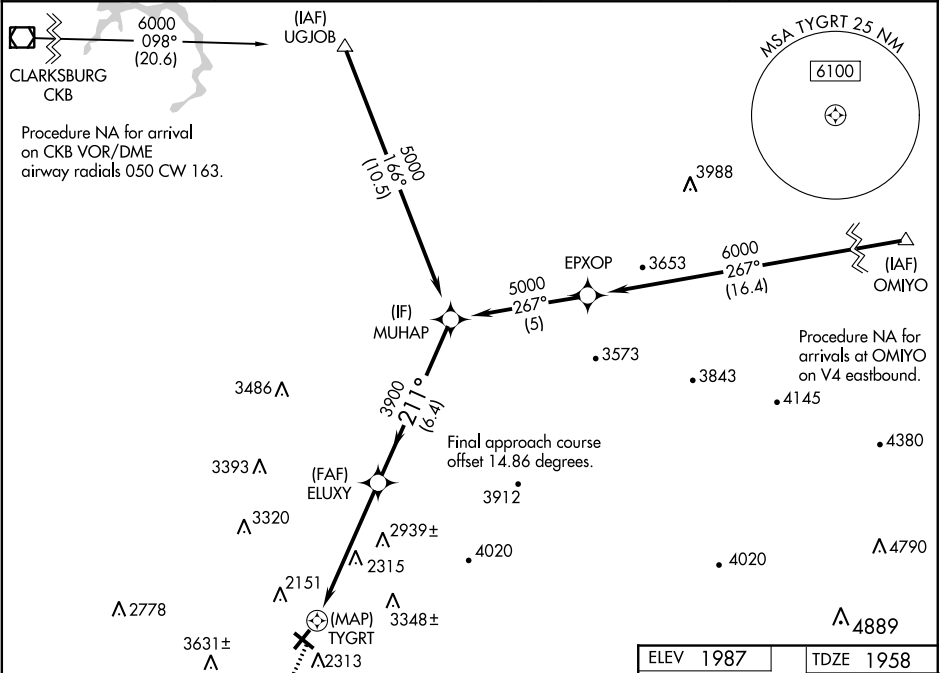
▲

☄

Straight-in Rwy 23 NA at night. Circling to Rwy 14, 23, 32 NA at night.  
When local altimeter setting not received, use Buckhannon altimeter setting and increase all MDAs 100 feet. Rwy 23 helicopter visibility reduction below 1 SM NA.  
-21°C

MISSED APPROACH: Climb to 6300 direct YUKNE and on track 195° to BEVFE and hold, continue climb-in hold to 6300.

ASOS 119.275	CLARKSBURG APP CON ★ 121.15 284.65	CTAF 123.6	122.9 0
-----------------	---------------------------------------	---------------	---------



CATEGORY	A	B	C	D
LNVA MDA	3160-1¼ 1202 (1200-1¼)	3160-1½ 1202 (1200-1½)	3160-3 1202 (1200-3)	
CIRCLING	3160-1¼ 1173 (1200-1¼)	3160-1½ 1173 (1200-1½)	3720-3 1733 (1800-3)	NA

ELEV 1987

TDZE 1958

REIL Rwy 23 0

MIRL Rwy 5-23 0