

WAAS CH 86812 W24A	APP CRS 245°	Rwy Idg TDZE Apt Elev	7501 730 732
--	------------------------	-----------------------------	---

RNAV (GPS) RWY 24

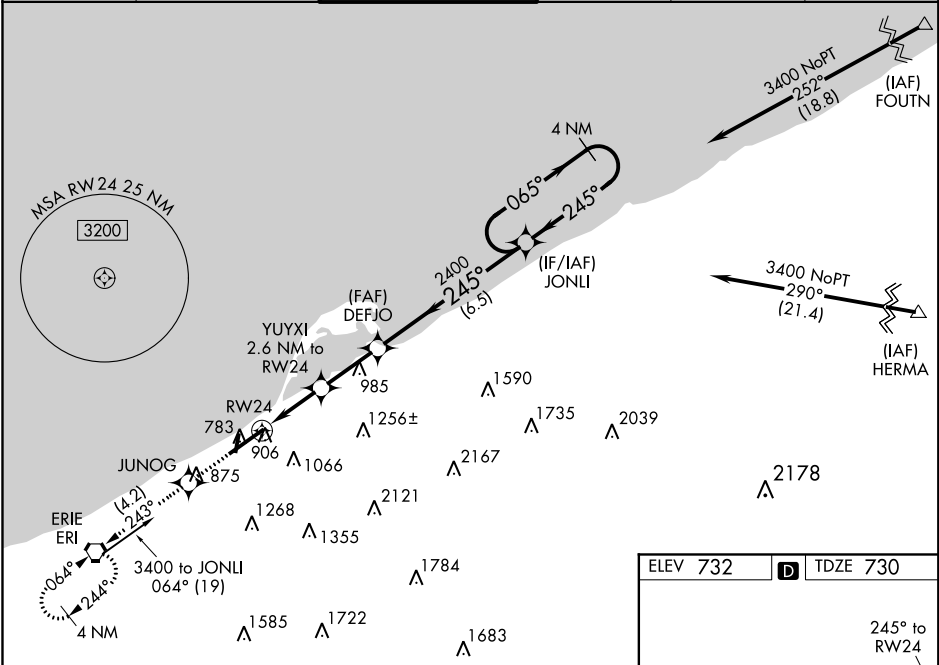
ERIE INTL/TOM RIDGE FIELD (ERI)

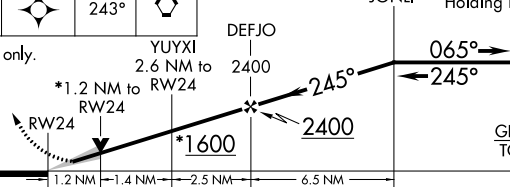
▼ Night landing: Rwy 2, 20 NA. Baro-VNAV NA when using Ashtabula, OH altimeter setting. For uncompensated Baro-VNAV systems, LNAV/VNAV NA below -19°C (-2°F) or above 54°C (130°F). DME/DME RNP-0.3 NA. VDP NA with Ashtabula, OH altimeter setting. When local altimeter setting not received, use Ashtabula, OH altimeter setting and increase all DA 96 feet, all MDA 100 feet and increase LPV all Cats visibility ⅓ mile, LNAV/VNAV all Cats visibility ⅓ mile, LNAV Cats C and D visibility ¼ mile and Circling Cat C and D visibility ½ mile. For inop MALS when using Ashtabula, OH altimeter setting, increase LPV all Cats visibility to 1⅓ mile.

MALS

MISSED APPROACH:
 Climb to 3000 direct JUNOG and on track 243° to ERI VORTAC and hold.

ATIS 120.35	BUFFALO APP CON★ 121.0 257.8	ERIE TOWER★ 118.1 (CTAF) 0 257.8	GND CON 121.9	CLNC DEL 126.8	UNICOM 122.95
-----------------------	--	--	-------------------------	--------------------------	-------------------------



3000 ↑	JUNOG ✧	tr 243°	ERI ⬡				
*LNAV only.				YUYXI 2.6 NM to RW24	DEFJO 2400	JONLI 4 NM Holding Pattern	065° 245° 3400
				*1.2 NM to RW24	*1600	2400	GP 3.00° TCH 55
				1.2 NM	1.4 NM	2.5 NM	6.5 NM
CATEGORY		A		B		C	D
LPV	DA			987-½		257 (300-½)	
LNAV/ VNAV	DA			1073-⅝		343 (400-⅝)	
LNAV MDA		1160-½ 430 (500-½)		1160-¾ 430 (500-¾)			
CIRCLING		1320-1 588 (600-1)	1340-1 608 (700-1)	1380-1¾ 648 (700-1¾)		1380-2 648 (700-2)	

