

WAAS CH 77612 W06A	APP CRS 064°	Rwy Idg 7501 TDZE 732 Apt Elev 732
--	------------------------	---

RNAV (GPS) RWY 6
ERIE INTL/TOM RIDGE FIELD (ERI)

RNAV 1-GPS or RADAR required for procedure entry. RNP APCH.

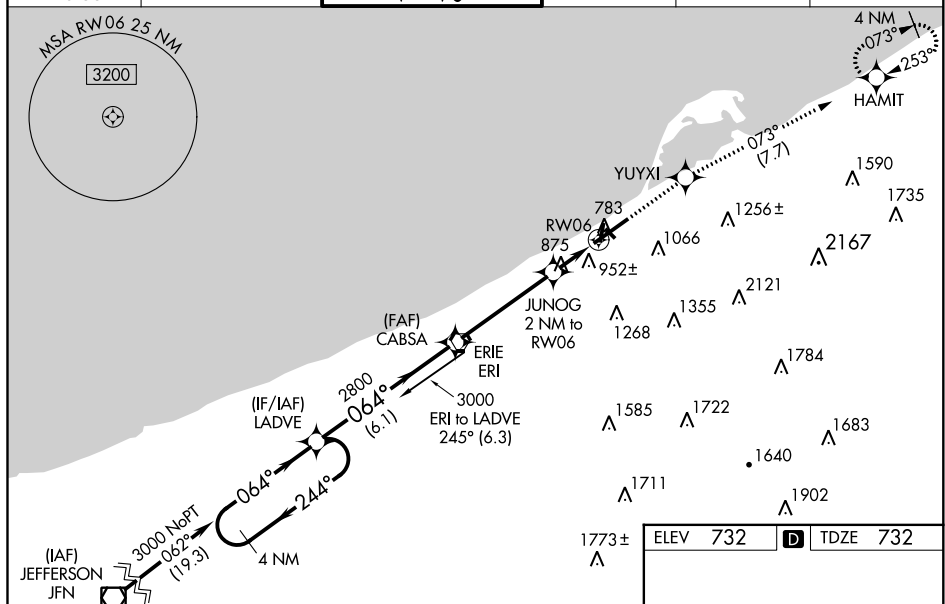
▼ Baro-VNAV NA when using Ashtabula, OH altimeter setting. For uncompensated Baro-VNAV systems, LNAV/VNAV NA below -19°C (-2°F) or above 54°C (130°F).

▲ Circling Rwy 2, 20 NA at night. Rwy 2, 20 helicopter visibility reduction below 1 SM NA. Rwy 6 helicopter visibility reduction below RVR 4000 NA. VDP NA with Ashtabula, OH altimeter setting. When local altimeter setting not received, use Ashtabula, OH altimeter setting and increase all DA 96 feet, all MDA 100 feet and increase LNAV/VNAV all Cats visibility to 1 ½ SM, LNAV Cats C and D visibility to 1 ¼ SM, Circling Cat C visibility to 2 ¼ SM and Cat D visibility to 2 ½ SM. For inop MALSR, when using Ashtabula, OH altimeter setting, increase LPV all Cats visibility to RVR 6000, LNAV/VNAV all Cats visibility to 2 ¼ SM and LNAV Cats A and B visibility to RVR 5000.

MALSR

MISSED APPROACH:
Climb to 3200 direct
YUYXI and on track
073° to HAMIT and
hold

ATIS 120.35	BUFFALO APP CON ★ 121.0 257.8	ERE TOWER ★ 118.1 (CTAF) 0 257.8	GND CON 121.9	CLNC DEL 126.8	UNICOM 122.95
----------------	----------------------------------	-------------------------------------	------------------	-------------------	------------------



4 NM Holding Pattern LADVE 3000 ← 244° 064° → GP 3.00° TCH 55		CABSA 2800 2800 *1420 6.1 NM 4.3 NM 0.6 NM 1.4 NM		3200 ↑ YUYXI tr 073° *LNAV only JUNOG 2 NM to RW06 *1.4 NM to RW06 RW06		HAMIT tr 073°	
CATEGORY	A	B	C	D			
LPV DA	982/40		250 (300-¾)				
LNAV/VNAV DA	1255/60		523 (600-1¼)				
LNAV MDA	1220/40 488 (500-¾)		1220/50 488 (500-1)				
CIRCLING	1320-1 588 (600-1)	1340-1 608 (700-1)	1380-1¾ 648 (700-1¾)	1380-2 648 (700-2)			

