



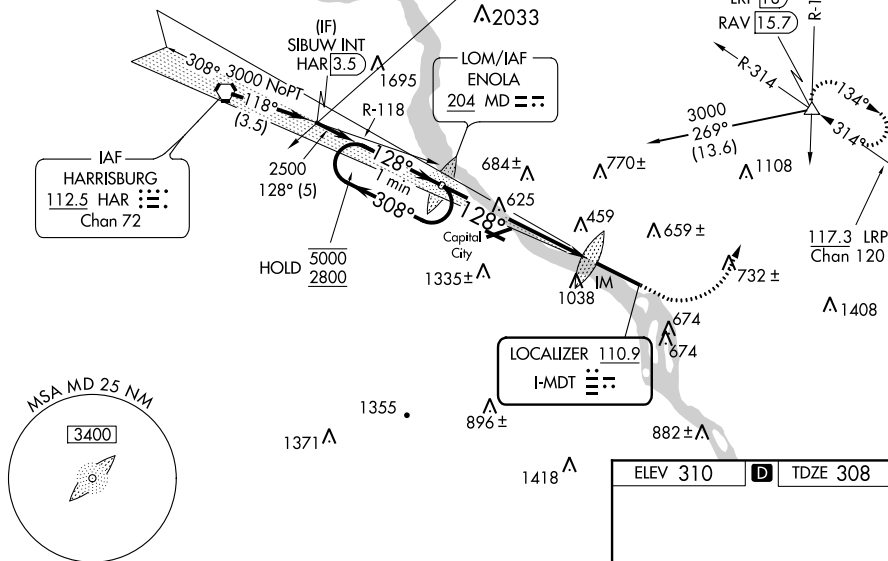
ILS RWY 13 (CAT II & III) HARRISBURG INTL (MDT)

ALSF-2

MISSED APPROACH: Climb to 900 then climbing left turn to 3000 on heading 060° and RAV VORTAC R-193 to BAARN INT/LRP 18 DME and hold.

ALTERNATE MISSED
APCH FIX HARRISBURG
HAR 
R-281  101° 112.5
Chan 72

Procedure NA for arrival on HAR VORTAC
airway radials 102 CW 157 and at
HAR VORTAC on V12 eastbound. 1



NE-4, 03 DEC 2020 to 31 DEC 2020

One Minute Holding Pattern

ENOLA LOM

5000 ← 308°

2800 → 128°

GS 3.00°
TCH 55

2500

128°

461

900

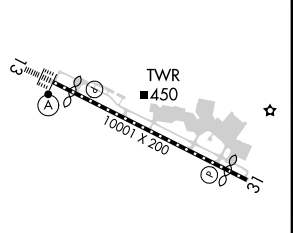
3000

hdg 060°

RAV R-193

BAARN △

VGS1 and ILS glidepath not coincident
(VGS1 Angle 3.00/TCH 75).



CATEGORY		A	B	C	D
S-ILS 13	CAT II RA 101/12 100 DA 408				
S-ILS 13	CAT III RVR 06				

CATEGORY II & III ILS - SPECIAL AIRCREW
& AIRCRAFT CERTIFICATION REQUIRED

TDZ/CL Rwy 13
REIL Rwy 31
HIRL Rwy 13-31