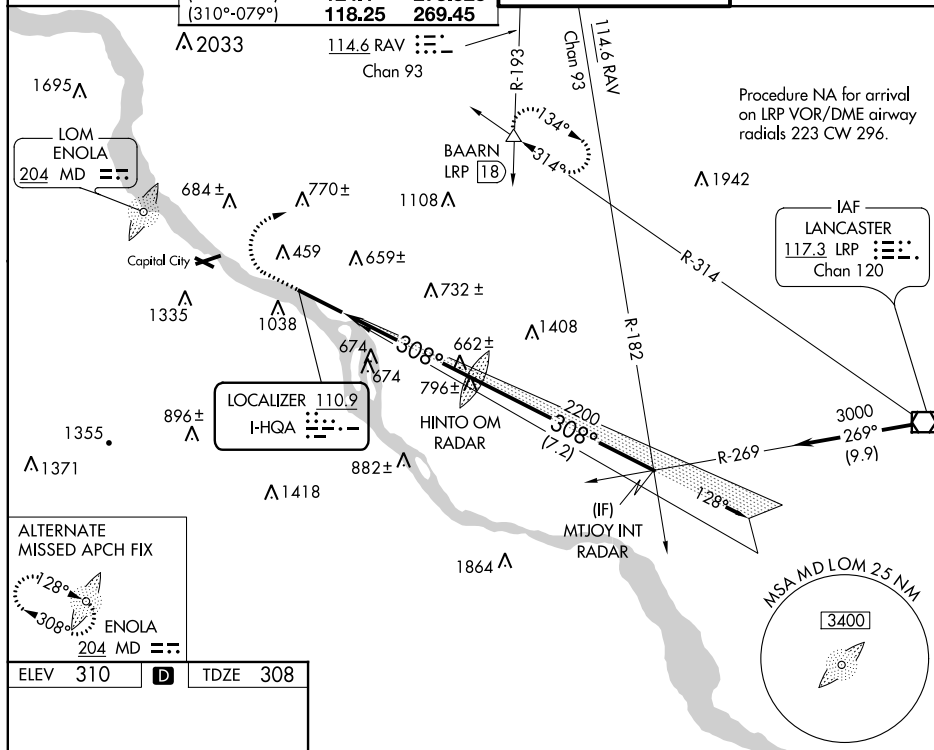


ILS or LOC RWY 31
HARRISBURG INTL (MDT)

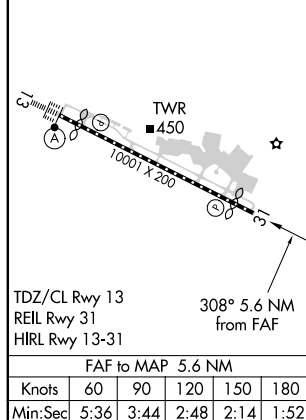
Circling NA south of Rwy 13-31.

MISSED APPROACH: Climb to 800 then climbing right turn to 3000 on heading 090° and RAV VORTAC R-193 to BAARN INT/LRP 18 DME and hold.

GND CON
121.7 348.6



ELEV	310	D	TDZE	308
------	-----	----------	------	-----



HARRISBURG, PENNSYLVANIA
Amdt 1E 25APR19

40°12'N-76°46'W

HARRISBURG INTL (MDT)
ILS or LOC RWY 31

NE-4, 03 DEC 2020 to 31 DEC 2020