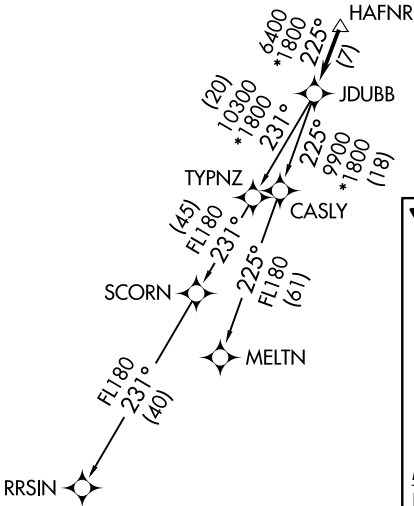
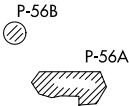


ASOS 119.925
CLNC DEL
121.8 257.65
132.075 269.075 (When Tower Closed)
GND CON
121.8 257.65
MARTINSBURG TOWER ★
124.3 (CTAF) 233.7
POTOMAC DEP CON
126.825 239.025

TOP ALTITUDE:
3000

TAKEOFF MINIMUMS
Rwy 8: Standard.
Rwy 26: Standard with a minimum
climb of 225' per NM to 2100.

- NOTE: RNAV 1.
NOTE: RADAR required.
NOTE: DME/DME/IRU or GPS required.
NOTE: Takeoff Rwy 8: If issued an ATC heading that requires a westbound turn, climb heading 081° to 1200 prior to turning for obstacle avoidance.
NOTE: Takeoff Rwy 26: If issued an ATC heading that requires a right turn, climb heading 261° to 2400 prior to turning for obstacle avoidance.



DEPARTURE ROUTE DESCRIPTION

Climb on heading assigned by ATC, expect RADAR vectors to HAFNR, then on track 225° to JDUBB, thence. . . .
 . . . on assigned transition, maintain 3000, expect clearance to filed altitude within ten (10) minutes after departure.

MELTN TRANSITION (JDUBB3.MELTN)
RRSIN TRANSITION (JDUBB3.RRSIN)

NOTE: Chart not to scale.

(JDUBB3.JDUBB) 26MAR20

EASTERN WV RGNL/SHEPHERD FIELD (MRB)

NE-4, 03 DEC 2020 to 31 DEC 2020

NE-4, 03 DEC 2020 to 31 DEC 2020