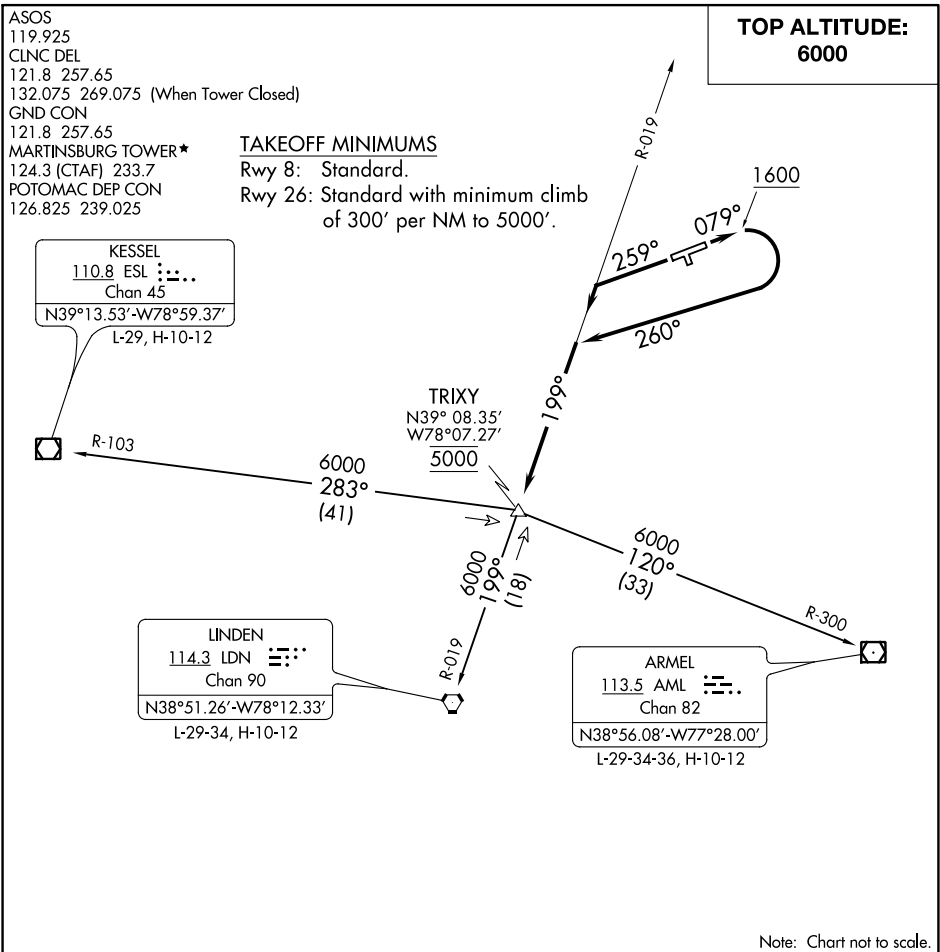


(TRIXY5.TRIXY) 20310
TRIXY FIVE DEPARTURE

EASTERN WV RGNL/SHEPHERD FIELD (MRB)
AL-249 (FAA) MARTINSBURG, WEST VIRGINIA



DEPARTURE ROUTE DESCRIPTION

TAKEOFF RUNWAY 8: Climb heading 079° to 1600, then climbing right turn heading 260° to intercept LDN VORTAC R-019 to cross TRIXY INT at 5000, then on transition or assigned route, thence

TAKEOFF RUNWAY 26: Climb heading 259° to intercept LDN VORTAC R-019 to cross TRIXY INT at 5000, then on transition or assigned route, thence

. . . . maintain 6000, expect filed altitude/flight level ten minutes after departure.

ARMEL TRANSITION (TRIXY5.AML): From over TRIXY INT on AML R-300 to AML VOR/DME.

KESSEL TRANSITION (TRIXY5.ESL): From over TRIXY INT on ESL R-103 to ESL VOR/DME.

LINDEN TRANSITION (TRIXY5.LDN): From over TRIXY INT on LDN R-019 to LDN VORTAC.

TRIXY FIVE DEPARTURE
(TRIXY5.TRIXY) 31MAR16

MARTINSBURG, WEST VIRGINIA
EASTERN WV RGNL/SHEPHERD FIELD (MRB)