

TOP ALTITUDE:
3000

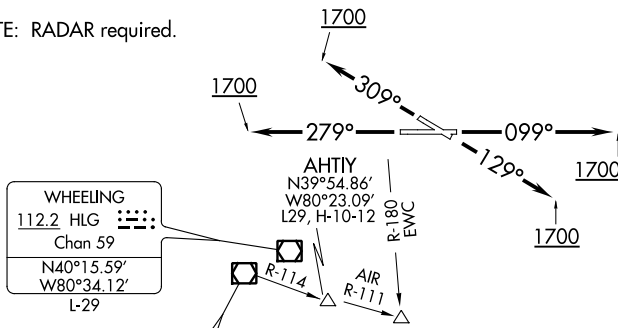
FRANKLIN
109.6 FKL 
N41°26.31'
W79°51.40'
L-30, H-10

BRIGGS
112.4 BSV
Chan 71
N40°44.44'-W81°25.93'
L-29, H-10

ELLWOOD CITY
115.8 EWC $\frac{1}{2} = \frac{1}{2}$
Chan 105
N40°49.50'-W80°12.69'
I-29, H-10

TYROO 


NOTE: RADAR required.






BELLAIRE
117.1 AIR :
Chan 118
N40°01.02'
W80°49.03'
L-29, H-10-12

KEMAN
N39°51.63'
W80°02.50'
H-10-12

TAKEOFF MINIMUMS
Rwys 10, 28, 31: Standard.
Rwy 13: Standard with minimum
climb of 205' per NM to 1800.

JOHNSTOWN
113.0 JST  --
Chan 77
N40°19.00'
W78°50.05'
I-29, H-10-12


PARKERSBURG
108.6 JPU 
Chan 23
N39°26.47'-W81°22.49'
L-29, H-10-12

MORGANTOWN
111.6 MGW 
Chan 53
N39°33.40'-W79°51.62'
L-29, H-10-12

ELKINS
114.2 EKN $\Xi:-$
Chan 89
N38°54.87'-W80°05.96'
I-29, H-10-12

DEPARTURE ROUTE DESCRIPTION

TAKEOFF RUNWAY 10: Climb heading 099° until 1700 thence....

TAKEOFF RUNWAY 13: Climb heading 129° until 1700 thence....

TAKEOFF RUNWAY 28: Climb heading 279° until 1700 thence....

TAKEOFF RUNWAY 31: Climb heading 309° until 1700 thence....

....expect vectors to assigned route/fix. Maintain 3000. Expect further clearance to requested altitude 10 minutes after departure.

NOTE: Chart not to scale.