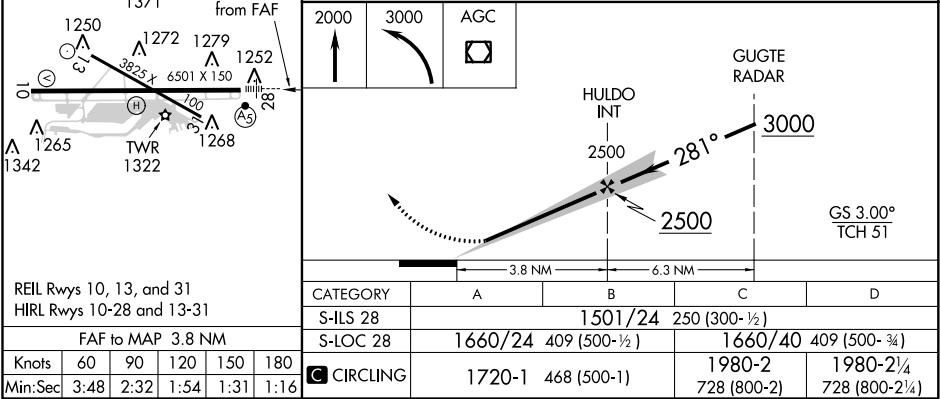
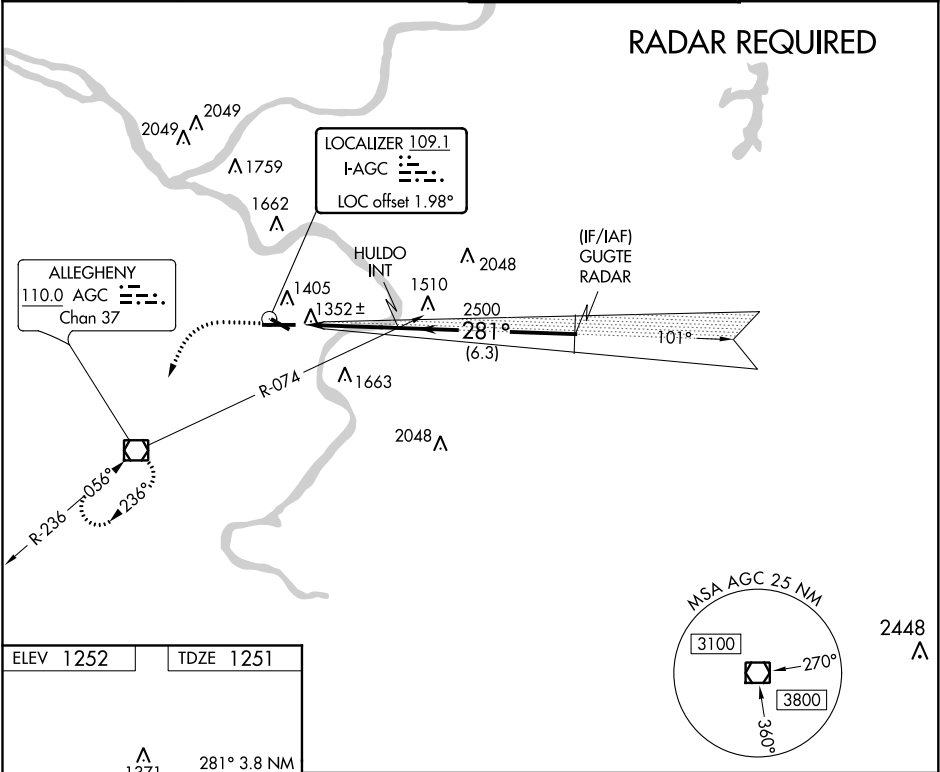


LOC I-AGC 109.1	APP CRS 281°	Rwy ldg TDZE Apt Elev 6501 1251 1252
---------------------------	------------------------	--

ILS or LOC RWY 28
ALLEGHENY COUNTY (AGC)

<div> For inoperative MALSR, increase S-LOC Cats C and D visibility to RVR 6000.</div>	<div> MALSR</div>	MISSED APPROACH: Climb to 2000 then climbing left turn to 3000 direct AGC VOR/DME and hold.
---	--	---

ATIS 120.55	PITTSBURGH APP CON 119.35 285.575	ALLEGHENY TOWER 121.1 239.0	GND CON 121.7
-----------------------	---	---------------------------------------	-------------------------



NE-4, 03 DEC 2020 to 31 DEC 2020

NE-4, 03 DEC 2020 to 31 DEC 2020