

WAAS CH <b>69327</b> <b>W33A</b>	APP CRS <b>333°</b>	Rwy Idg <b>5000</b> TDZE <b>108</b> Apt Elev <b>120</b>
--	------------------------	---

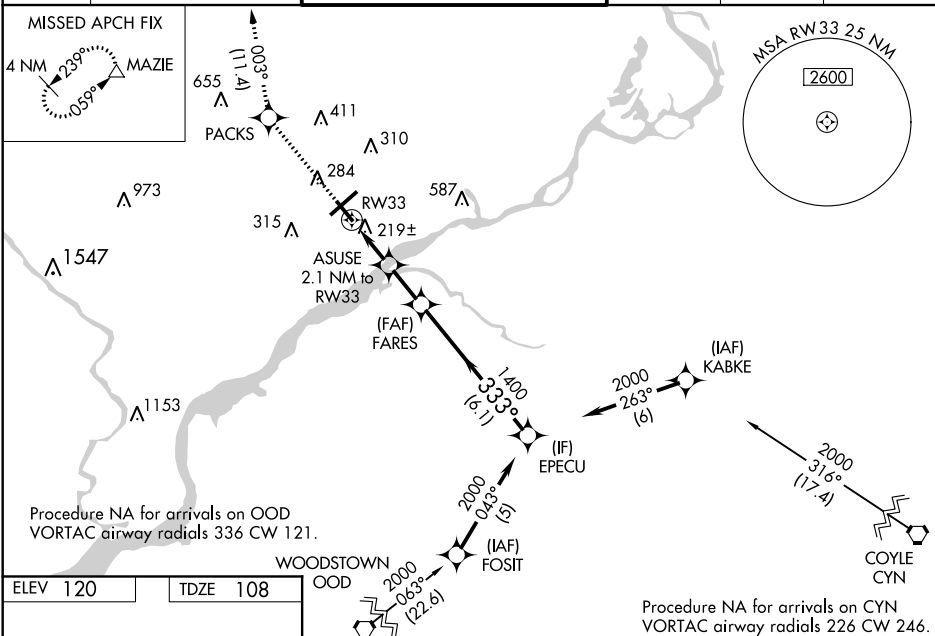
RNAV (GPS) RWY 33  
NORTHEAST PHILADELPHIA (PNE)

**⚠** Baro-VNAV NA when using Philadelphia Intl altimeter setting. For uncompensated Baro-VNAV systems, LNAV/VNAV NA below -15°C (5°F) or above 43°C (109°F). When local altimeter setting not received, use Philadelphia Intl altimeter setting and increase all DA 50 feet and all MDA 60 feet. Increase LPV and LNAV/VNAV visibility all Cats ½ mile and LNAV Cats C/D visibility ¼ mile. DME/DME RNP-0.3 NA.

**MISSED APPROACH:**  
Climb to 2500 direct  
PACKS and on track  
003° to MAZIE and hold.

ATIS 121.15	PHILADELPHIA APP CON 123.8 291.7	NORTHEAST PHILADELPHIA TOWER ★ 126.9 (CTAF) 0 278.8	GND CON 121.7	CLNC DEL 127.25	UNICOM 122.95
----------------	-------------------------------------	--	------------------	--------------------	------------------

MISSED APCH FIX



Procedure NA for arrivals on CYN  
VORTAC airway radials 226 CW 246.

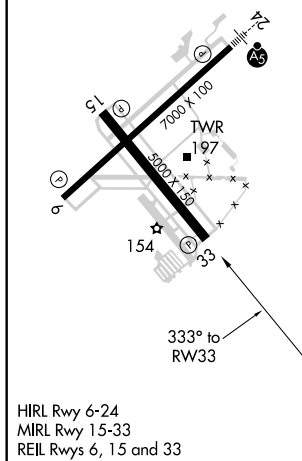


Diagram illustrating a 4-segment RNAV approach. The approach is labeled "MAZIE" and "EPCU". The distance from the start of the approach to the final approach fix (FAF) is 2.1 NM, and the distance from the FAF to the runway (RW33) is 1.8 NM. The total distance is 3.9 NM. The approach is labeled "ASUSE 2.1 NM to RW33". The approach is labeled "GP 3.00° TCH 39°". The approach is labeled "2500", "PACKS", "tr 003°", "MAZIE", "FARES", "EPCU", "2000", "333°", "1400", "800", "2.1 NM", "1.8 NM", "3.9 NM", "RW33", "ASUSE 2.1 NM to RW33", "GP 3.00° TCH 39°".

NORTHEAST PHILADELPHIA (PNE)  
RNAV (GPS) RWY 33