

LOC I-GUT	APP CRS		10R	10C
		Rwy Idg	11492	9707
		TDZE	1135	1141
		Apt Elev	1203	1203

ILS or LOC RWY 10R

PITTSBURGH INTL (PIT)

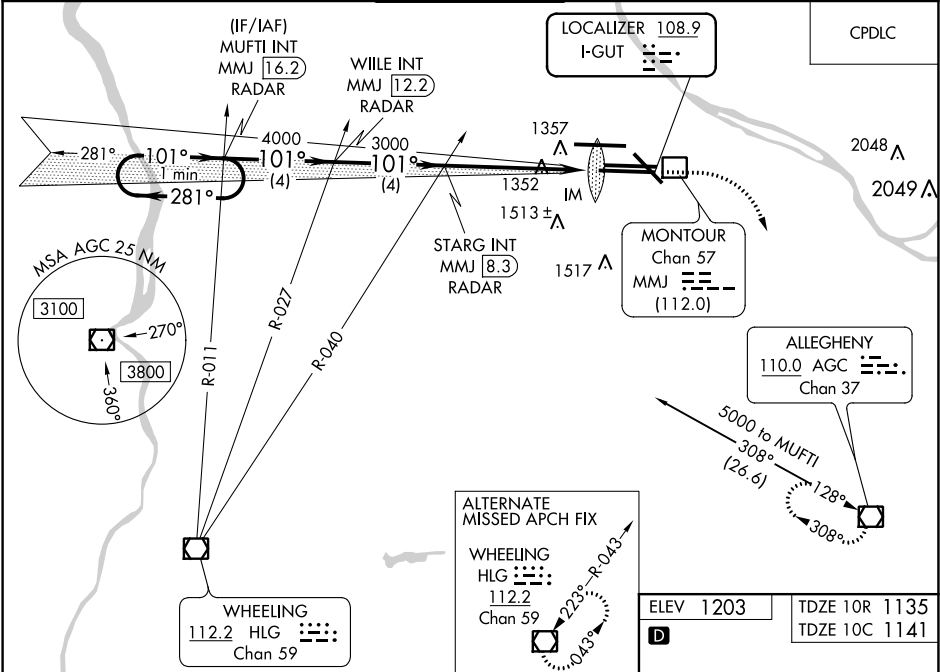
⚠

Simultaneous approach authorized with Rwy 10L.
For inop ALS, increase S-ILS 10R Cat E visibility to RVR 4000. For inop ALS, increase S-LOC 10R Cat C, D, E visibility to 1 3⁄8 SM.

ALS-F-2

MISSED APPROACH: Climb to 1900 then climbing right turn to 5000 direct AGC VOR/DME and hold, continue climb-in-hold to 5000.

D-ATIS	PITTSBURGH APP CON	PITTSBURGH TOWER	GND CON	CLNC DEL
ARR 127.25	123.95 360.8	128.3 291.7	SOUTH 121.9 348.6	126.75 353.7
DEP 135.9			NORTH 127.8 348.6	



One Minute Holding Pattern	MUFTI INT	WILE INT	STARG INT	1900	5000	AGC
	MMJ [16.2] RADAR	MMJ [12.2] RADAR	MMJ [8.3] RADAR			
5000	281°	101°	101°	3000	3000	3000
GS 3.00° TCH 51	4 NM	4 NM	4.3 NM	1.1 NM	0.2	
CATEGORY	A	B	C	D	E	
S-ILS 10R	1335/18 200 (200-½)				1335/24 200 (200-½)	
S-LOC 10R	1620/24 485 (500-½)		1620/50 485 (500-1)		1620/60 485 (500-1¼)	
SIDESTEP 10C	1620/50 479 (500-1)	1620-1½ 479 (500-1½)	1620-2 479 (500-2)	1620-2½ 479 (500-2½)	1620-2¾ 479 (500-2¾)	
CIRCLING	1700-1 497 (500-1)	1880-2 677 (700-2)	1880-2½ 677 (700-2½)	1880-2¾ 677 (700-2¾)	1880-3 677 (700-3)	

ELEV 1203

TDZE 10R 1135

TDZE 10C 1141

D

101° 5.6 NM from FAF

REIL Rwy 10C

HIRL all Rwys

TDZ/CL Rwys 10L, 10R, 28L, 28R, 28C, and 32

FAF to MAP 5.6 NM

Knots 60 90 120 150 180

Min:Sec 5:36 3:44 2:48 2:14 1:52