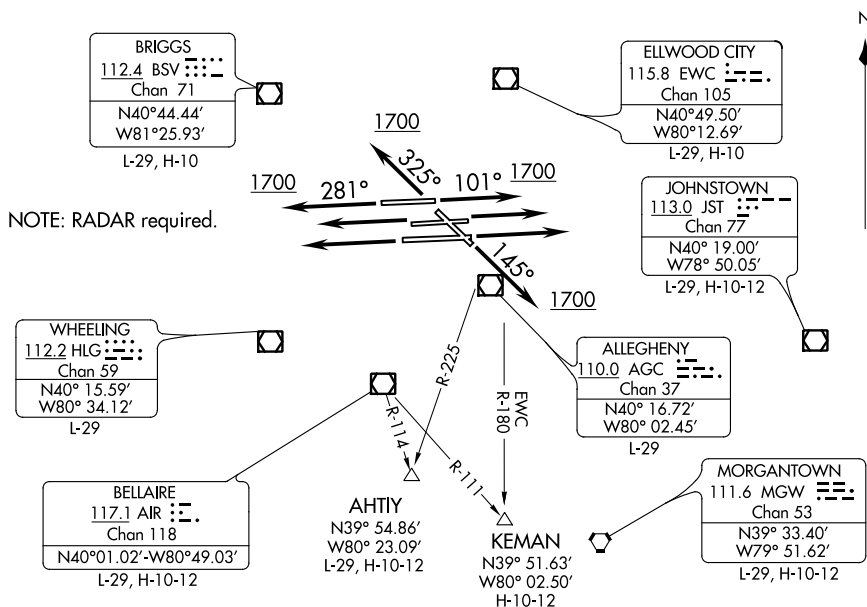


PITTSBURGH FIVE DEPARTURE

TOP ALTITUDE:
JETS: 5000
PROPS: 4000

Rwy 32: 300-1½ or standard with minimum climb of 255' per NM to 1500.



NOTE: Chart not to scale

DEPARTURE ROUTE DESCRIPTION

TAKEOFF RUNWAYS 10L, 10C, 10R: Climb heading 101° until leaving 1700 thence. . .
TAKEOFF RUNWAYS 28L, 28C, 28R: Climb heading 281° until leaving 1700 thence. . .
TAKEOFF RUNWAY 14: Climb heading 145° until leaving 1700 thence. . .
TAKEOFF RUNWAY 32: Climb heading 325° until leaving 1700 thence. . .

... make no turns except as assigned by ATC or vectored to assigned route/fix.

JETS: Maintain 5000 or requested altitude if lower.

PROPS: Maintain 4000 or requested altitude if lower.

Expect further clearance to requested altitude 10 minutes after departure.