

APP CRS  
**101°**

Rwy Idg  
TDZE  
**1141**

Apt Elev  
**1203**

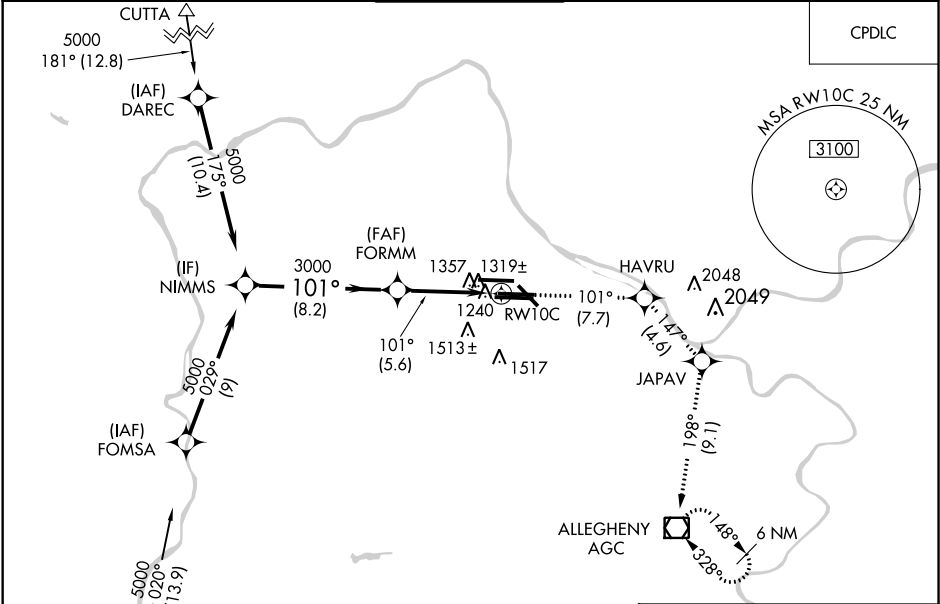
**RNAV (RNP) Z RWY 10C**

PITTSBURGH INTL (PIT')

▼ For uncompensated Baro-VNAV systems, procedure NA below -17°C (1°F) or above 46°C (116°F). GPS Required. Simultaneous approach authorized with ILS or LOC Rwy 10L, ILS Rwy 10L (Cat II), ILS Rwy 10L (Cat III). Use of FD or AP providing RNAV track guidance required during simultaneous operations.

MISSED APPROACH: Climb to 4000 on track 101° to HAVRU and on track 147° to JAPAV and on track 198° to AGC VOR/DME and hold.

D-ATIS ARR <b>127.25</b> DEP <b>135.9</b>	PITTSBURGH APP CON <b>123.95 360.8</b>	PITTSBURGH TOWER <b>128.3 291.7</b>	GND CON SOUTH <b>121.9 348.6</b> NORTH <b>127.8 348.6</b>	CLNC DEL <b>126.75 353.7</b>
---	---	--	---	---------------------------------



ELEV 1203

TDZE 1141

GP 3.00° TCH 51	5000	3000	3000	3000	3000
	101°	101°	147°	198°	
	8.2 NM	5.6 NM			
CATEGORY	A	B	C	D	
RNP 0.11 DA		1540-1½	399 (400-1½)		
RNP 0.20 DA		1566-1½	425 (400-1½)		
RNP 0.30 DA		1669-1¾	528 (500-1¾)		

**AUTHORIZATION REQUIRED**

REIL Rwy 10C  
HIRL all Rwys  
TDZ/CL Rwys 10L, 10R, 28L, 28R,  
28C, and 32