

APP CRS  
101°

Rwy Idg	<b>11492</b>
TDZE	<b>1135</b>
Apt Elev	<b>1203</b>

RNAV (RNP) Z RWY 10R  
PITTSBURGH INTL (PIT)

RNP AR APCH.

▼ For uncompensated Baro-VNAV systems, procedure NA below -17°C or above 46°C. For inop ALS, increase RNP 0.14 all Cats visibility to RVR 6000, RNP 0.20 all Cats visibility to 1/2 SM, RNP 0.30 all Cats visibility to 2 1/2 SM. Simultaneous approach authorized with ILS or LOC Rwy 10L, ILS Rwy 10L (Cat II), ILS Rwy 10L (Cat III). Use of FD or AP providing RNAV track guidance required during simultaneous operations.

ALSF-2



**MISSED APPROACH:**  
Climb to 4000 on track  
101° to KADEC and on  
track 143° to JAPAV and  
on track 198° to AGC  
VOR/DME and hold.

D-ATIS  
ARR **127.25**  
DEP **135.9**

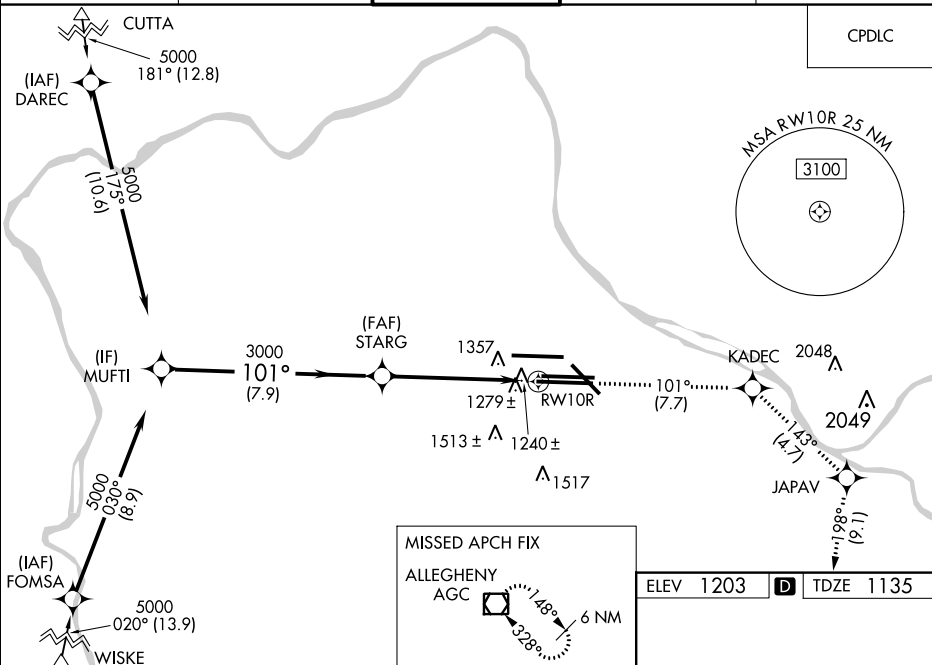
PITTSBURGH APP CON  
123.95 360.8

PITTSBURGH TOWER  
128.3 291.7

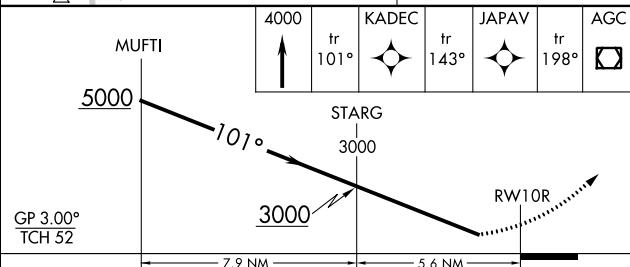
	GND	CON
SOUTH	121.9	348.6
NORTH	127.8	348.6

CLNC DEL  
126.75 353.7

CPDLC



ELEV	1203	<b>D</b>	TDZE	1135
------	------	----------	------	------



CATEGORY	A	B	C	D
RNP 0.14 DA		1511/40	376 (400-¾)	
RNP 0.20 DA		1572/50	437 (400-1)	
RNP 0.30 DA		1745-1¾	610 (600-1¾)	

## AUTHORIZATION REQUIRED

PITTSBURGH, PENNSYLVANIA

Orig-E 03JAN19

40°29'N-80°14'W

PITTSBURGH INTL (PIT)

RNAV (RNP) Z RWY 10R

NE-4, 03 DEC 2020 to 31 DEC 2020