

APP CRS	Rwy Idg	11500
281°	TDZE	1125
	Apt Elev	1203

RNAV (RNP) Z RWY 28L
PITTSBURGH INTL (PIT)

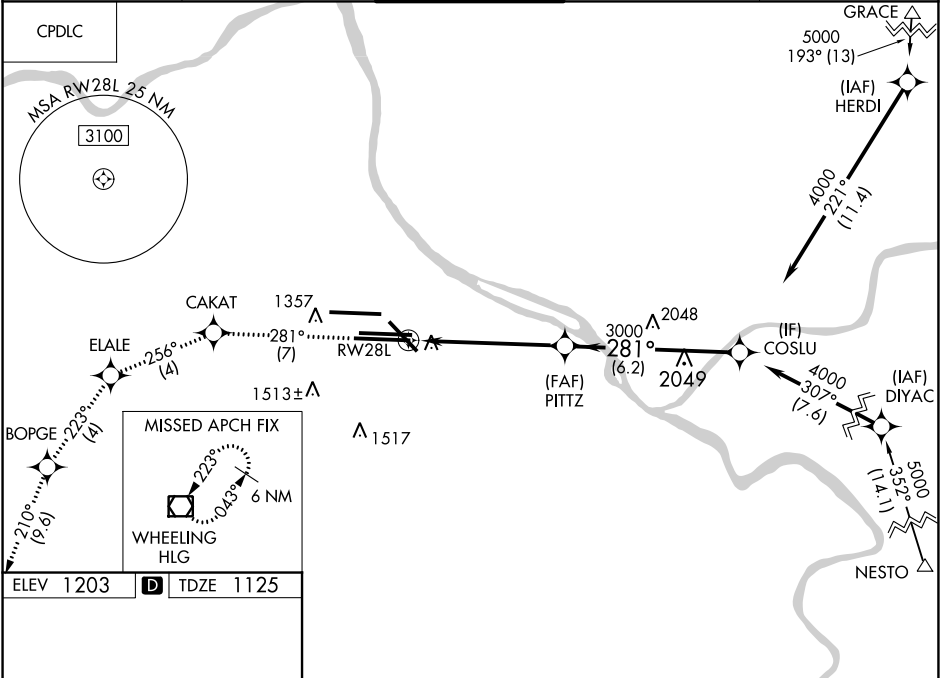
▼

For uncompensated Baro-VNAV systems procedure NA below -18°C (0°F) or above 54°C (130°F). Simultaneous approach authorized. GPS Required. For inoperative ALS, increase RNP 0.13 all Cats visibility to RVR 6000.

MALSR

MISSED APPROACH: Climb to 4000 on track 281° to CAKAT and track 256° to ELALE and track 223° to BOPGE and track 210° to HLG VOR/DME and hold.

D-ATIS ARR 127.25 DEP 135.9	PITTSBURGH APP CON 123.95 360.8	PITTSBURGH TOWER 128.3 291.7	GND CON SOUTH 121.9 348.6 NORTH 127.8 348.6	CLNC DEL 126.75 353.7
---	---	--	---	---------------------------------



	4000 ↑ tr 281° CAKAT tr 256° ELAIE tr 223° BOPGE tr 210° HLG COSLU				
	VGSI and RNAV glidepath not coincident (VGSI Angle 3.00/TCH 70).				
	CATEGORY	A	B	C	D
	RNP 0.13 DA	1529/40 404 (400-¾)			
RNP 0.30 DA	1579/45 454 (400-¾)				
AUTHORIZATION REQUIRED					

NE-4, 03 DEC 2020 to 31 DEC 2020

NE-4, 03 DEC 2020 to 31 DEC 2020