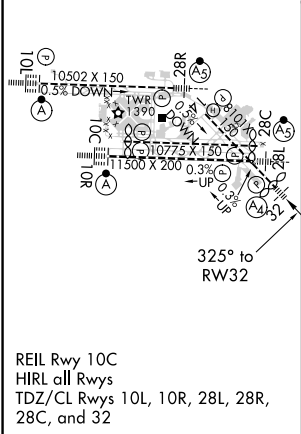
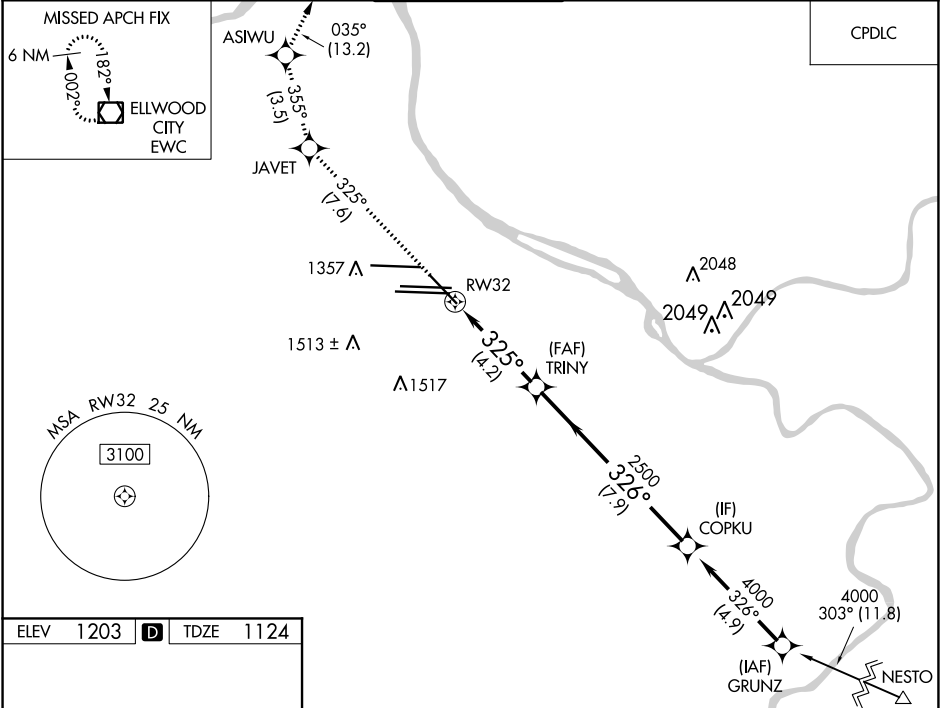


APP CRS	Rwy ldg	7466
325°	TDZE	1124
	Apt Elev	1203

RNAV (RNP) Z RWY 32  
PITTSBURGH INTL (PIT)

For uncompensated Baro-VNAV systems, procedure NA below -18°C (0°F) or above 54°C (130°F). GPS required.		MALS	MISSED APPROACH: Climb to 4000 on track 325° to JAVET and track 355° to ASIWU and track 035° to EWC VOR/DME and hold.	
D-ATIS ARR 127.25 DEP 135.9	PITTSBURGH APP CON 123.95 360.8	PITTSBURGH TOWER 128.3 291.7	GND CON SOUTH 121.9 348.6 NORTH 127.8 348.6	CLNC DEL 126.75 353.7



4000 ↑ tr 325°	JAVET ✧ tr 355°	ASIWU ✧ tr 035°	EWC ◻	
VGSI and RNAV glidepath not coincident (VGSI Angle 3.00/TCH 72).				
CATEGORY	A	B	C	D
RNP 0.30 DA	1503/40 379 (300-¾)			
AUTHORIZATION REQUIRED				

NE-4, 03 DEC 2020 to 31 DEC 2020

NE-4, 03 DEC 2020 to 31 DEC 2020