

WAAS CH <b>90126</b> <b>W10A</b>	APP CRS <b>101°</b>	Rwy Idg TDZE Apt Elev	<b>9708</b> <b>1141</b> <b>1203</b>
--	------------------------	-----------------------------	---

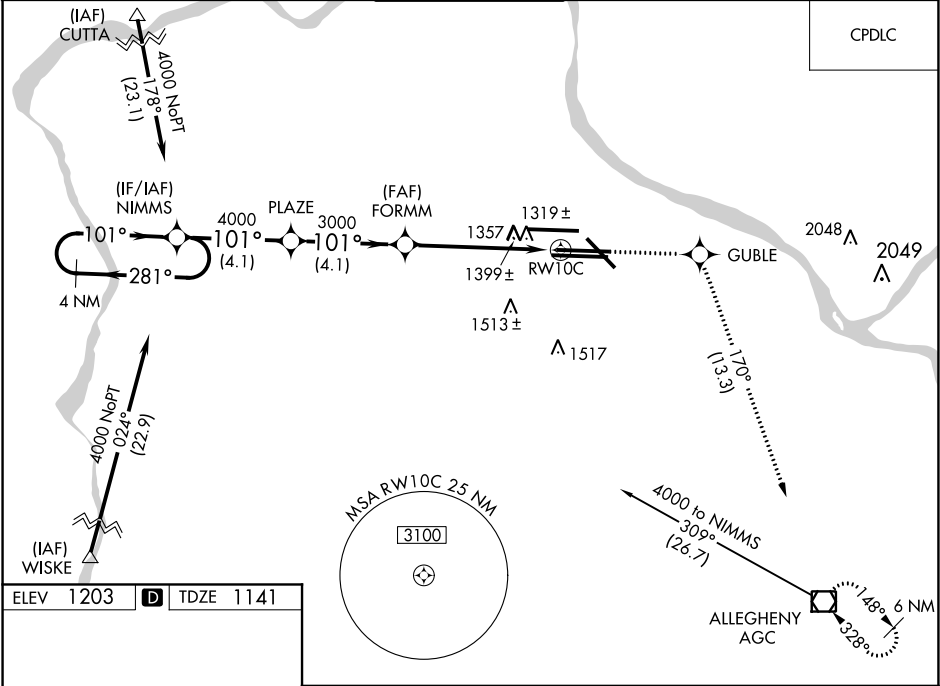
RNAV (GPS) Y RWY 10C

PITTSBURGH INTL (PIT')

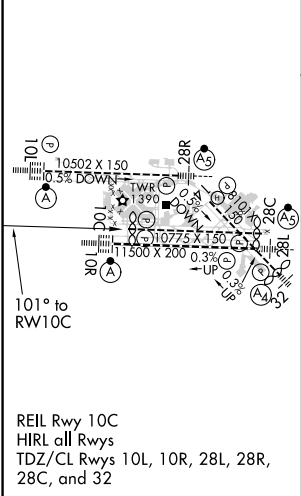
**⚠** For uncompensated Baro-VNAV systems, LNAV/VNAV NA below -17°C (2°F) or above 54°C (130°F). DME/DME RNP-0.3 NA. Simultaneous approach authorized with ILS or LOC Rwy 10L, ILS Rwy 10L (Cat II), ILS Rwy 10L (Cat III). LNAV procedure NA during simultaneous operations. Use of FD or AP providing RNAV track guidance required during simultaneous operations.

**MISSED APPROACH:**  
Climb to 4000 direct GUBLE and right turn on track 170° to AGC VOR/DME and hold.

D-ATIS ARR <b>127.25</b> DEP <b>135.9</b>	PITTSBURGH APP CON <b>123.95 360.8</b>	PITTSBURGH TOWER <b>128.3 291.7</b>	GND CON SOUTH <b>121.9 348.6</b> NORTH <b>127.8 348.6</b>	CLNC DEL <b>126.75 353.7</b>
---	---	--	---	---------------------------------



ELEV <b>1203</b>	<b>D</b>	TDZE <b>1141</b>
------------------	----------	------------------



4 NM Holding Pattern		4000	GUBLE	AGC
NIMMS		PLAZE	FORMM	AGC
4000 ← 281°		101° → 4000	101°	170°
GP 3.00° TCH 51		3000	1.5 NM to RWY 10C	RWY 10C
4.1 NM		4.1 NM	4.1 NM	1.5 NM
CATEGORY	A	B	C	D
LPV DA	1438/50 297 (300-1)			
LNAV/VNAV DA	1634-1¼ 493 (500-1¾)			
LNAV MDA	1660/55 519 (500-1)	1660-1½ 519 (500-1½)	1880-2 677 (700-2)	1660-1¾ 519 (500-1¾)
<b>C</b> CIRCLING	1700-1 497 (500-1)	1880-2 677 (700-2)	1880-2½ 677 (700-2½)	

NE-4, 03 DEC 2020 to 31 DEC 2020

NE-4, 03 DEC 2020 to 31 DEC 2020