


WAAS CH 97326 W28B	APP CRS 281°	Rwy Idg 11500 TDZE 1125 Apt Elev 1203
--	------------------------	--

RNAV (GPS) Y RWY 28L

PITTSBURGH INTL (PIT')

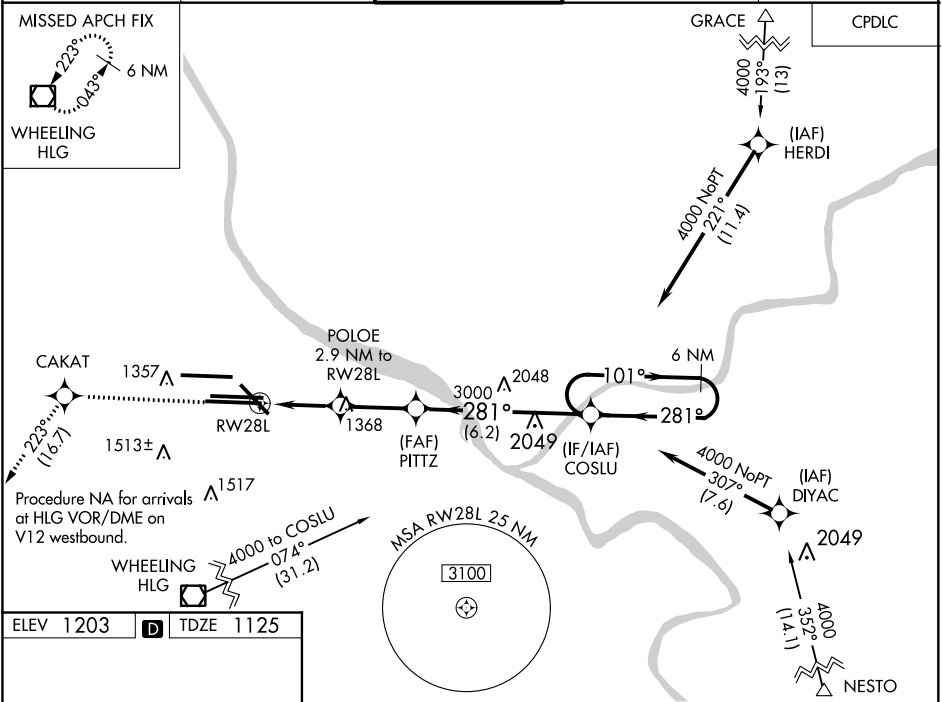
▼ For uncompensated Baro-VNAV systems, LNAV/VNAV NA below -18°C (0°F) or above 54°C (130°F). DME/DME RNP-0.3 NA. For inop ALS, increase LNAV Cats C/D visibility to 1½ SM. LNAV procedure NA during simultaneous operations. Use of FD or AP required during simultaneous operations.

MALSR

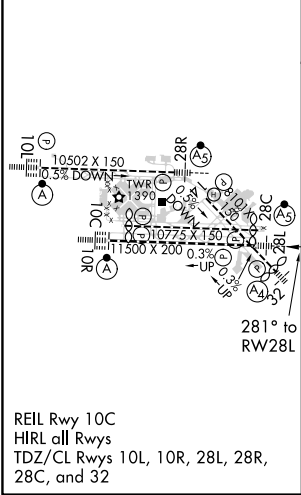


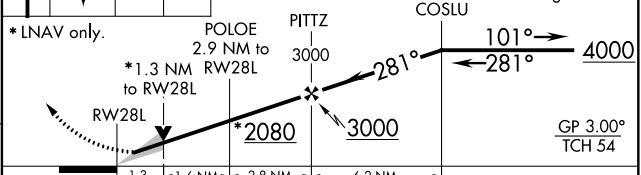
MISSED APPROACH:
Climb to 4000 direct CAKAT and on track 223° to HLG VOR/DME and hold.

D-ATIS ARR 127.25 DEP 135.9	PITTSBURGH APP CON 123.95 360.8	PITTSBURGH TOWER 128.3 291.7	GND CON SOUTH 121.9 348.6 NORTH 127.8 348.6	CLNC DEL 126.75 353.7
---	---	--	---	---------------------------------



ELEV 1203	D	TDZE 1125
------------------	----------	------------------



4000	CAKAT	tr 223°	HLG	VGSI and RNAV glidepath not coincident (VGSI Angle 3.00/TCH 70).	6 NM Holding Pattern
* LNAV only.					
					
GP 3.00° TCH 54					
CATEGORY	A	B	C	D	
LPV DA	1325/18		200 (200-½)		
LNAV/VNAV DA	1549/40		424 (400-¾)		
LNAV MDA	1600/24 475 (400-½)		1600/50 475 (400-1)		
CIRCLING	1700-1 497 (500-1)		1880-2 677 (700-2)		1880-2¼ 677 (700-2¼)