

LOC I-CKB	APP CRS	Rwy Idg	7130
109.3	211°	TDZE	1224
		Apt Elev	1224

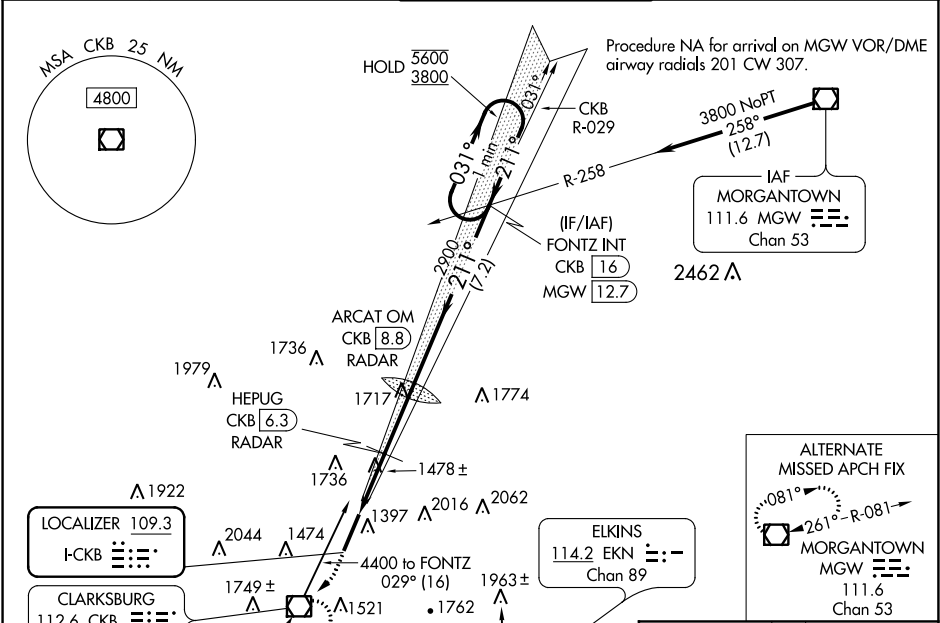
ILS or LOC RWY 21
NORTH CENTRAL WEST VIRGINIA (CKB)

⚠ For inop ALS, increase S-LOC 21 Cat C/D visibility to 2½ SM, and HEPUG fix minimums Cat C/D visibility to 1½ SM. DME from CKB VOR/DME.

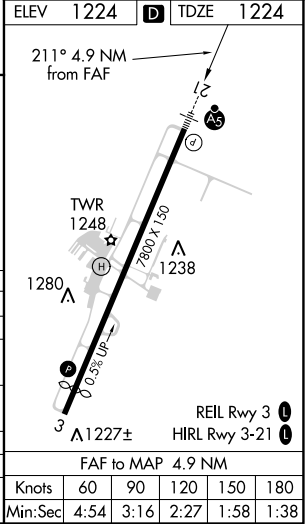
MALSR

MISSED APPROACH: Climb to 1800 then climbing right turn to 3200 direct CKB VOR/DME and hold, continue climb-in-hold to 3200.

ATIS 127.825	CLARKSBURG APP CON ★ 121.15 284.65	CLARKSBURG TOWER ★ 126.7 (CTAF) 0 257.925	GND CON 121.9	UNICOM 123.0
------------------------	--	---	-------------------------	------------------------



ELEV 1800 3200	CKB	ARCAT OM CKB [8.8] RADAR	FONTZ INT CKB [16]	One Minute Holding Pattern
*LOC only.	*CKB	HEPUG CKB [6.3] RADAR		
CKB [3.9]	CKB [5.3]			
1.4 NM	1 NM	2.5 NM	7.2 NM	
CATEGORY	A	B	C	D
S-ILS 21		1424/24	200 (200-½)	
S-LOC 21	2020/24 796 (800-½)	2020/40 796 (800-¾)	2020-1¾ 796 (800-1¾)	
CIRCLING	2020-1 796 (800-1)	2040-1¼ 816 (900-1¼)	2320-3 1096 (1100-3)	
HEPUG FIX MINIMUMS (DME or RADAR REQUIRED)				
S-LOC 21	1740/24 516 (600-½)	1740/55 516 (600-1)		
CIRCLING	1940-1 716 (800-1)	2040-1¼ 816 (900-1¼)	2320-3 1096 (1100-3)	



NE-4, 03 DEC 2020 to 31 DEC 2020

NE-4, 03 DEC 2020 to 31 DEC 2020