

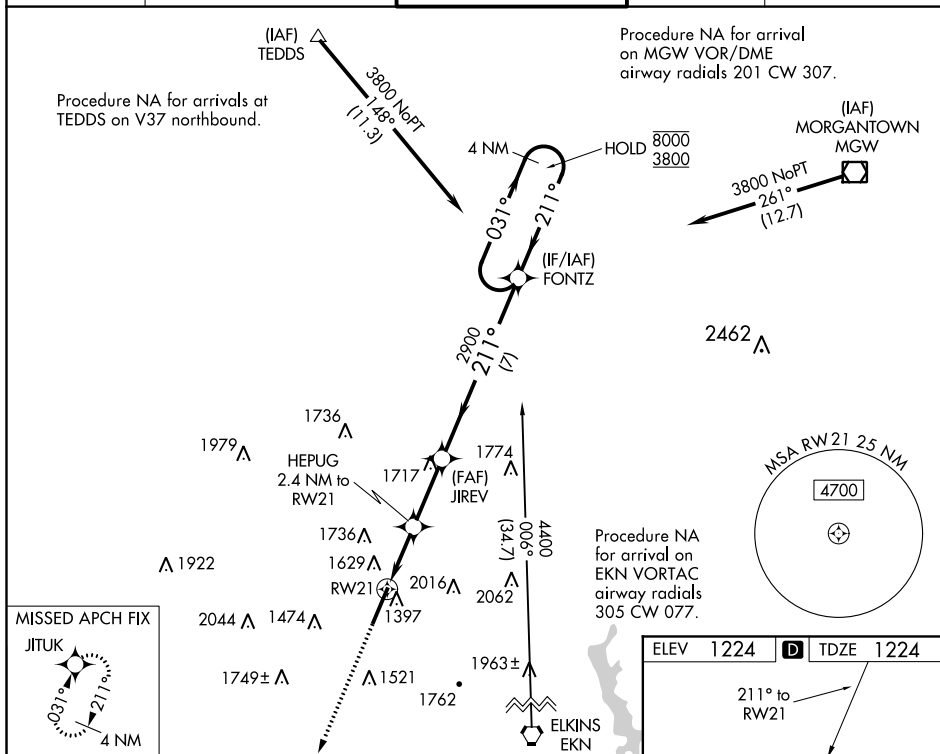


WAAS CH 82504 W21A	APP CRS 211°	Rwy Idg 7130 TDZE 1224 Apt Elev 1224
--	------------------------	---

RNAV (GPS) RWY 21

NORTH CENTRAL WEST VIRGINIA (CKB)

RNP APCH.			 MALSR MISSED APPROACH: Climb to 3900 direct JITUK and hold.	
 For uncompensated Baro-VNAV systems, LNAV/VNAV NA below -16°C or above 54°C. For inop ALS, increase LNAV Cats C and D visibility to 1 1/2 SM.				
ATIS 127.825	CLARKSBURG APP CON ★ 121.15 284.65	CLARKSBURG TOWER ★ 126.7 (CTAF) 0 257.925	GND CON 121.9	UNICOM 123.0



3900 JITUK

*LNAV only.

HEPUG 2.4 NM to RW21

JIREV 2900

FONTZ 4 NM Holding Pattern

031° → 8000
← 211° 3800

*1.6 NM to RW21

RW21

*2020

2900

GP 3.00°
TCH 60

CATEGORY	A	B	C	D
LPV DA	1424/24	200 (200-½)		
LNAV/VNAV DA	1786-1⅓	562 (600-1⅓)		
LNAV MDA	1800/24	576 (600-½)	1800-1¼	576 (600-1¼)
C CIRCLING	1940-1 716 (800-1)	2040-1¼ 816 (900-1¼)	2320-3	1096 (1100-3)

