

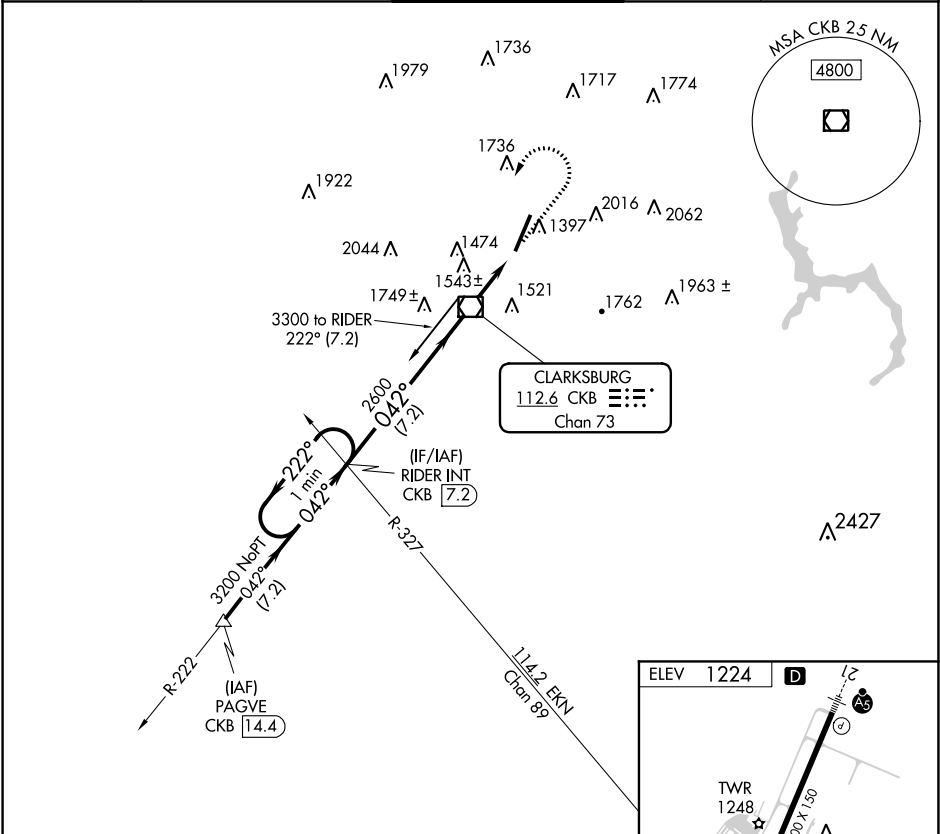
VOR/DME CKB	APP CRS	Rwy Idg	N/A
112.6	042°	TDZE	N/A
Chan 73		Apt Elev	1224

VOR-A

NORTH CENTRAL WEST VIRGINIA (CKB)

<p>When local altimeter setting not received, Use Morgantown altimeter setting and increase all MDA 80 feet.</p>	<p>MISSED APPROACH: Climb to 2400, then climbing left turn to 3200 direct CKB VOR/DME and via CKB VOR/DME R-222 to RIDER INT/CKB 7.2 DME and hold.</p>
--	--

ATIS 127.825	CLARKSBURG APP CON* 121.15 284.65	CLARKSBURG TOWER* 126.7 (CTAF) 257.925	GND CON 121.9	UNICOM 123.0
-----------------	--------------------------------------	---	------------------	-----------------



One Minute Holding Pattern				RIDER INT CKB <u>7.2</u>	2400 ↑	3200 ↷	CKB □	CKB R-222	RIDER INT				
----------------------------	--	--	--	-----------------------------	-----------	-----------	----------	--------------	-----------	--	--	--	--

