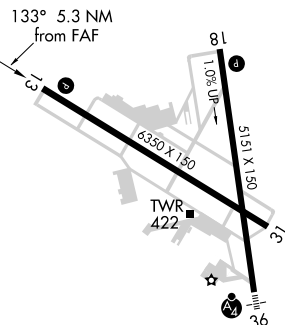


ILS or LOC RWY 13
READING RGNL/CARL A SPAATZ FIELD (RDG)

MISSED APPROACH: Climb to 900 then climbing right turn to 3200 on heading 280° and LRP VOR/DME R-020 to OUTLT INT/I-VXO 12.7 DME and hold.

UNICOM
122.95

REIL Rwy 13 and 31					
HIRL Rwy 13-31 and 18-36					
FAF to MAP 5.3 NM					
Knots	60	90	120	150	180
Min:Sec	5:18	3:32	2:39	2:07	1:46