

WAAS CH <b>97412</b> <b>W36A</b>	APP CRS <b>004°</b>	Rwy Idg <b>5151</b> TDZE <b>343</b> Apt Elev <b>344</b>
--	------------------------	---

RNAV (GPS) RWY 36

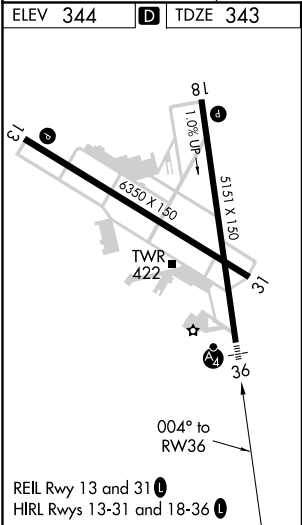
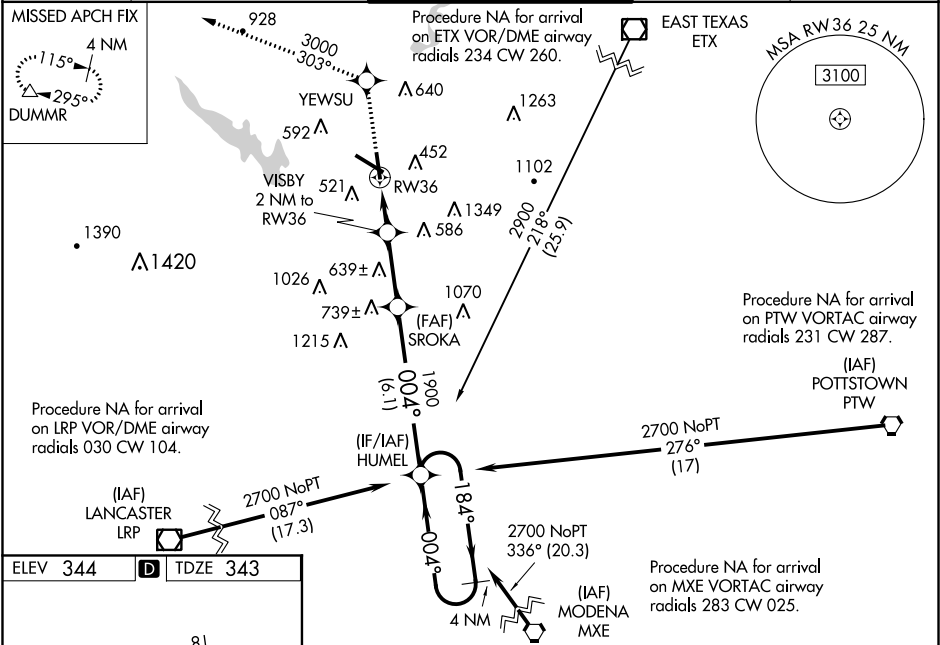
READING RGNL/CARL A SPAATZ FIELD (RDG)

**⚠ Night landing: Rwy 18, 31 NA. Inoperative table does not apply. Baro-VNAV NA when using Harrisburg Intl altimeter setting. For uncompensated Baro-VNAV systems, LNAV/VNAV NA below -15°C (5°F) or above 48°C (118°F). DME/DME RNP-0.3 NA. When local altimeter setting not received, use Harrisburg Intl altimeter setting and increase LPV DA to 715 feet and visibility ¼ mile, increase LNAV/VNAV DA to 928 feet and visibility ¼ mile and increase all MDA 100 feet, and LNAV Cats C and D visibility ¼ mile, and Circling Cats B and C visibility ¼ mile and Cat D visibility ½ mile.**

**MALSIF**

**MISSED APPROACH:**  
Climb to 3000 direct YEWSU and via 303° to DUMMR and hold, continue climb-in-hold to 3000.

ATIS <b>127.1</b>	READING APP CON ★ <b>125.15 257.9</b>	READING TOWER ★ <b>119.9 (CTAF) 0 288.3</b>	GND CON <b>121.9</b>	UNICOM <b>122.95</b>
----------------------	--	--	-------------------------	-------------------------



3000	YEWSU	DUMMR	HUMEL	4 NM Holding Pattern
↑	✦	tr 303°		
*LNAV only				
VISBY 2 NM to RW36				
*1.1 NM to RW36				
RW36				
1020*				
1900				
1.1 0.9 2.7 NM 6.1 NM				
CATEGORY	A	B	C	D
LPV DA	622-1 279 (300-1)			
LNAV/VNAV DA	835-1¾ 492 (500-1¾)			
LNAV MDA	740-1 397 (400-1)			740-1¼ 397 (400-1¼)
CIRCLING	1020-1 676 (700-1)		1020-2 676 (700-2)	1140-2½ 796 (800-2½)