

LOC I-HLG

109.7

APP CRS

033°

Rwy Idg

5002

TDZE

1172

Apt Elev

1194

ILS or LOC RWY 3

WHEELING OHIO COUNTY (HLG)

▼

Inoperative table does not apply to S-ILS all Cats and S-LOC Cats A/B.

▲

Autopilot coupled approach NA below 1401. DME or RADAR required.

MALSF

MISSED APPROACH: Climb to 1700 then climbing right turn to 3000 direct HLG VOR/DME and hold.

ASOS

127.375

PITTSBURGH APP CON

125.275 285.575

WHEELING TOWER ★

118.1(CTAF) 257.8

GND CON

121.75

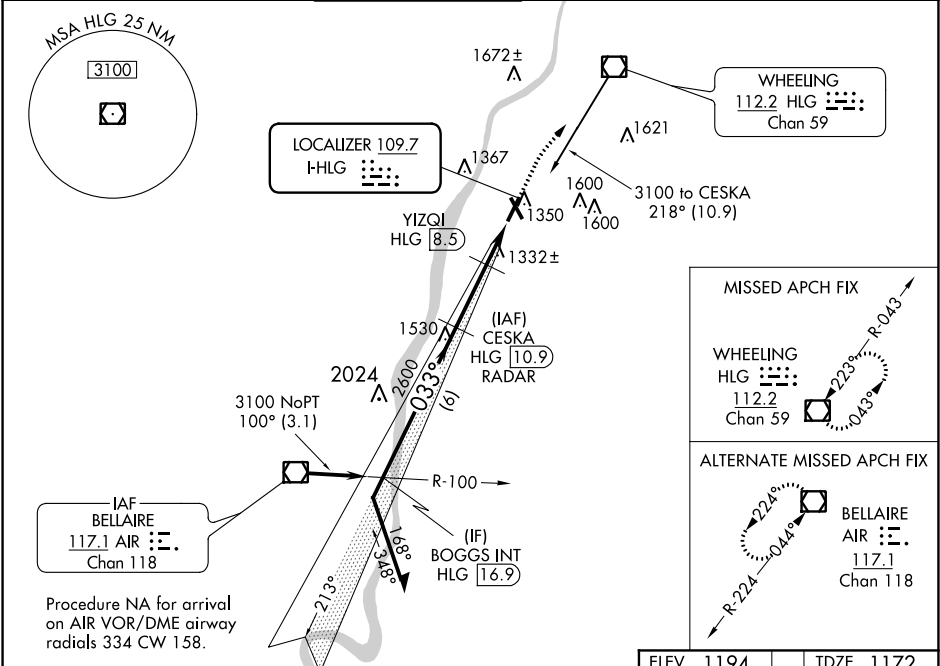
CNLC DEL

125.275

(when twr closed)

UNICOM

122.95



Remain within 10 NM				
CESKA HLG 10.9 RADAR				
3100 213° 033° 2600				
GS 3.00° TCH 60				
2600 1800				
2.5 NM 1.8 NM				
CATEGORY	A	B	C	D
S-ILS 3	1372-1 200 (200-1)			
S-LOC 3	1800-1	628 (700-1)	1800-1½	628 (700-1½)
CIRCLING	1800-1	606 (700-1)	1900-2 706 (800-2)	1920-2¼ 726 (800-2¼)
YIZQI FIX MINIMUMS				
S-LOC 3	1600-1 428 (500-1)			
CIRCLING	1720-1 526 (600-1)	1740-1 546 (600-1)	1900-2 706 (800-2)	1920-2¼ 726 (800-2¼)

