

WAAS

CH 90513

W03A

APP CRS

033°

Rwy Idg

5002

TDZE

1172

Apt Elev

1194

RNAV (GPS) RWY 3

WHEELING OHIO COUNTY (HLG)

RNP APCH.

▼

Inoperative table does not apply to LPV and LNAV/VNAV all Cats and LNAV Cats A/B. For uncompensated Baro-VNAV systems, LNAV/VNAV NA below -17°C or above 54°C.

MALSF

⬆

⬆

MISSED APPROACH: Climb 1600 then climb to 3100 direct HLG VOR/DME and hold, continue climb-in-hold to 3100.

ASOS

127.375

PITTSBURGH APP CON

125.275 285.575

WHEELING TOWER ★

118.1(CTAF) 0257.8

GND CON

121.75

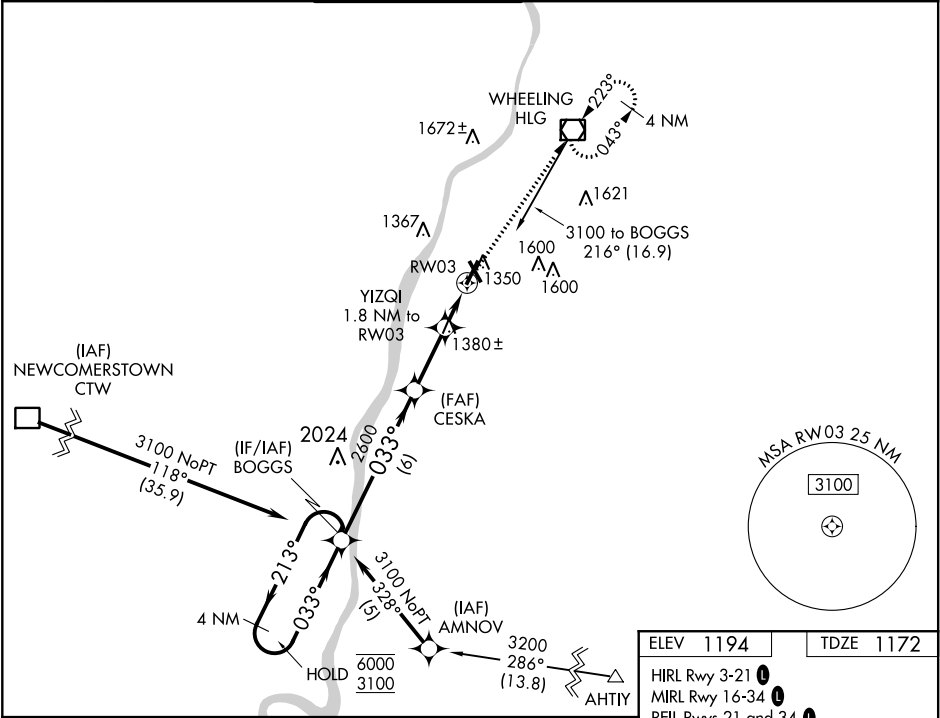
CLNC DEL

125.275

(when twr closed)

UNICOM

122.95



4 NM Holding Pattern BOGGS

6000

3100

213°

033°

GP 3.00°

TCH 60

CESKA

2600

YIZQI

1.8 NM to RW03

RW03

\*1800

6 NM

2.5 NM

1.8 NM

\*LNAV only.

CATEGORY	A	B	C	D
LPV DA		1372/50	200 (200-1)	
LNAV/VNAV DA		1439/50	267 (300-1)	
LNAV MDA	1640/55	468 (500-1)	1640/60	468 (500-1½)
CIRCLING	1720-1 526 (600-1)	1740-1 546 (600-1)	1920-2 726 (800-2)	1920-2¼ 726 (800-2¼)

ELEV 1194

TDZE 1172

HIRL Rwy 3-21

MIRL Rwy 16-34

REIL Rwy 21 and 34

TWR 1267

0.45 UP

0.5% UP

5002 X 130

033° to RW03