

LOC/DME I-HZL

**110.5**

Chan **42**

APP CRS

**284°**

Rwy Idg

**4898**

TDZE

**1603**

Apt Elev

**1603**

LOC RWY 28

HAZLETON RGNL (HZL)

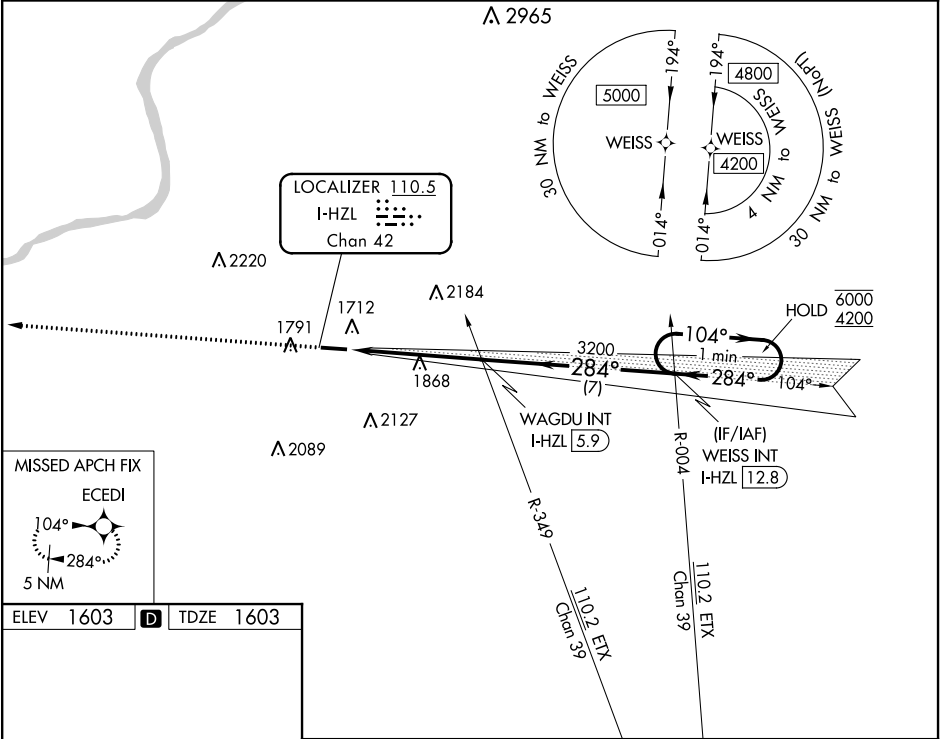
RNAV 1-GPS required for procedure entry.  
RNAV 1-GPS required from MAP to ECEDI.

MALS

MISSED APPROACH:  
Climb to 4400 direct ECEDI and hold.

Rwy 28 helicopter visibility reduction below 3/4 SM NA. Inop table does not apply to Cats A/B. For inop ALS, increase Cat C/D visibility to 1 7/8 SM.

AWOS-3 <b>119.975</b>	WILKES-BARRE APP CON <b>126.3 256.7</b>	CLNC DEL <b>121.7</b>	UNICOM <b>123.0 (CTAF)</b>
--------------------------	--	--------------------------	-------------------------------



ELEV **1603**

TDZE **1603**

104°  
284°  
5 NM

REIL Rwy 10

MRL Rwy 10-28

FAF to MAP 4.9 NM

Knots	60	90	120	150	180
Min:Sec	4:54	3:16	2:27	1:58	1:38

4400

WAGDU INT I-HZL **5.9**

I-HZL **2.9**

I-HZL **0.9**

3.00°  
TCH 40

1.9

3 NM

7 NM

WEISS INT I-HZL **12.8**

One Minute Holding Pattern

104°  
284°  
6000  
4200

CATEGORY	A	B	C	D
S-LOC 28	2280-1 677 (700-1)		2280-1 3/4 677 (700-1 3/4)	
CIRCLING	2280-1 677 (700-1)	2400-1 797 (800-1)	2480-2 1/2 877 (900-2 1/2)	2520-3 917 (1000-3)

NE-4, 03 DEC 2020 to 31 DEC 2020

NE-4, 03 DEC 2020 to 31 DEC 2020