

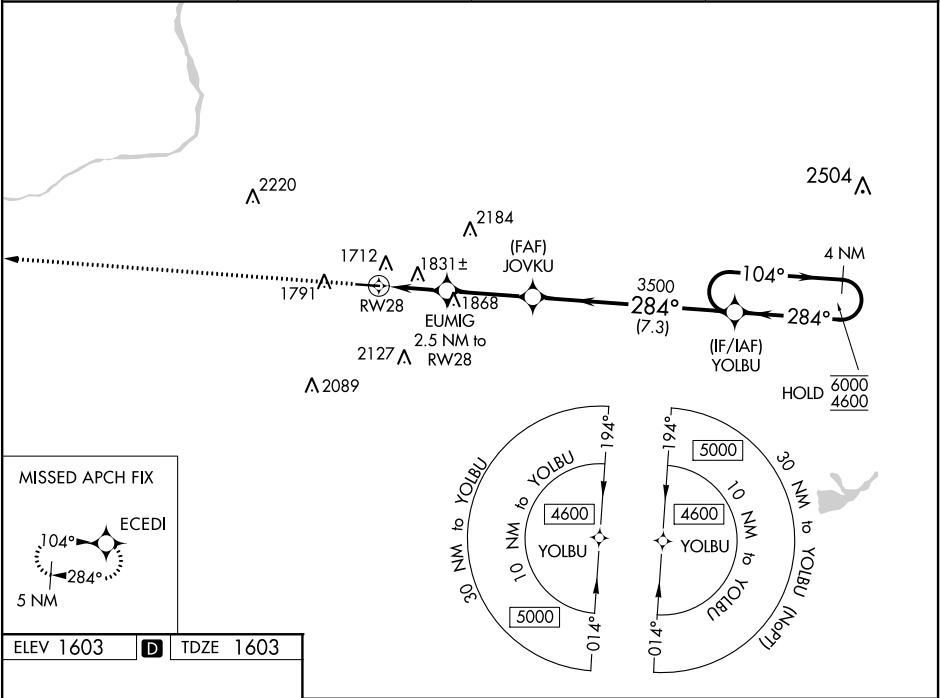
WAAS CH 50140 W28A	APP CRS 284°	Rwy Idg TDZE Apt Elev	4898 1603 1603
--	------------------------	-----------------------------	---

RNAV (GPS) RWY 28

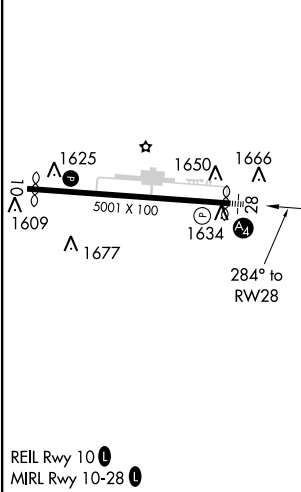
HAZLETON RGNL (HZL)

RNP APCH. ▼ Rwy 28 helicopter visibility reduction below ¾ SM NA. Inop table does not apply to LPV all Cats and LNAV Cats A/B. For uncompensated Baro-VNAV systems, LNAV/VNAV NA below -18°C or above 54°C. ▲	MALS A4	MISSED APPROACH: Climb to 4400 direct ECEDI and hold.
---	------------	--

AWOS-3 119.975	WILKES-BARRE APP CON 126.3 256.7	CLNC DEL 121.7	UNICOM 123.0 (CTAF) 0
--------------------------	--	--------------------------	---------------------------------



ELEV 1603	D	TDZE 1603
-----------	---	-----------



4400	ECEDI	EUMIG 2.5 NM to RW28	JOVKU 3500	YOLBU 4 NM Holding Pattern
*LNAV only.		*1.4 NM to RW28		
		2460*	3500	6000 4600
		1.4	1.1	3.1 NM
				7.3 NM
CATEGORY	A	B	C	D
LPV DA	1978-1	375 (400-1)		
LNAV/VNAV DA	2143-1¼	540 (600-1¼)		
LNAV MDA	2100-1	497 (500-1)	2100-1⅛	497 (500-1⅛)
CIRCLING	2140-1 537 (600-1)	2400-1 797 (800-1)	2480-2½ 877 (900-2½)	2520-3 917 (1000-3)

NE-4, 03 DEC 2020 to 31 DEC 2020

NE-4, 03 DEC 2020 to 31 DEC 2020