

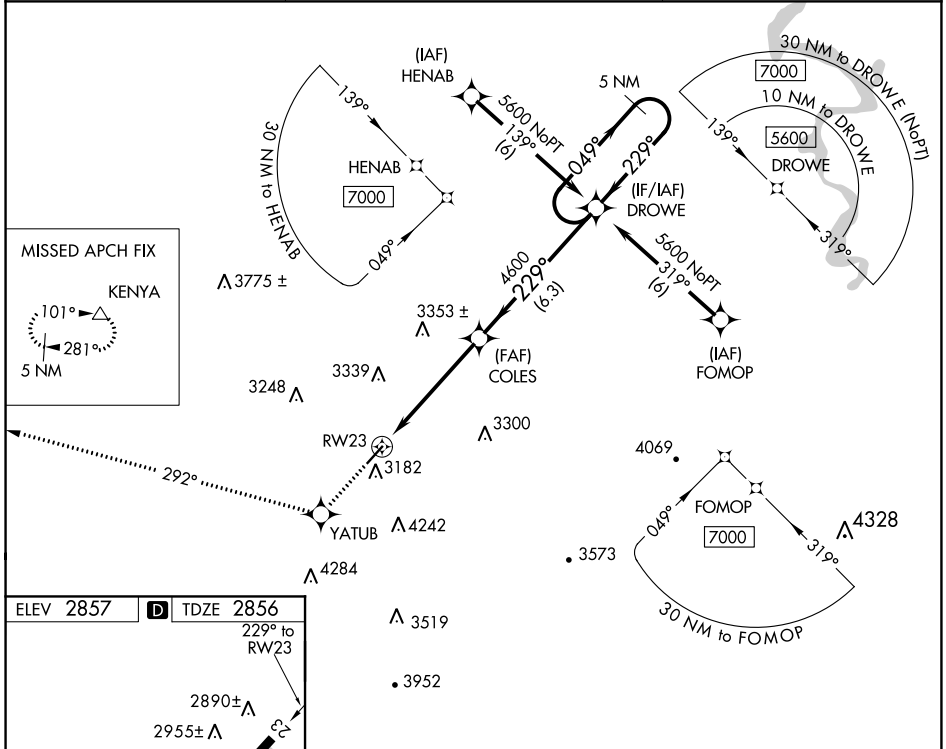
WAAS CH 50207 W23A	APP CRS 229°	Rwy Idg 4743 TDZE 2856 Apt Elev 2857
----------------------------------------	------------------------	-----------------------------------------------------------------

RNAV (GPS) RWY 23

MERCER COUNTY (BLF)

RNP APCH.	MISSED APPROACH: Climb to 6000 direct YATUB and via track 292° to KENYA and hold.
-----------	-----------------------------------------------------------------------------------

ASOS 132.725	INDIANAPOLIS CENTER 126.575 257.85	CTAF 122.9
------------------------	----------------------------------------------	----------------------



ELEV 2857	D	TDZE 2856	6000	YATUB	tr 292°	KENYA	VGSI and RNAV glidepath not coincident (VGSI Angle 3.00/TCH 65).
*RNAV only				DROWE			
*2.3 NM to RW23				5 NM Holding Pattern			
RW23				COLES			
2.3 NM				2.9 NM			
2.3 NM				6.3 NM			
CATEGORY	A			B		C	
LPV DA	3156-1			300 (300-1)		D	
RNAV MDA	3640-1 784 (800-1)			3640-1¼ 784 (800-1¼)		3640-2¼ 784 (800-2¼)	
	3640-2½ 784 (800-2½)			3640-2½ 784 (800-2½)		3640-2½ 784 (800-2½)	