

VOR/DME BLF	APP CRS	Rwy Idg	4743
110.0	225°	TDZE	2857
Chan 37		Apt Elev	2857

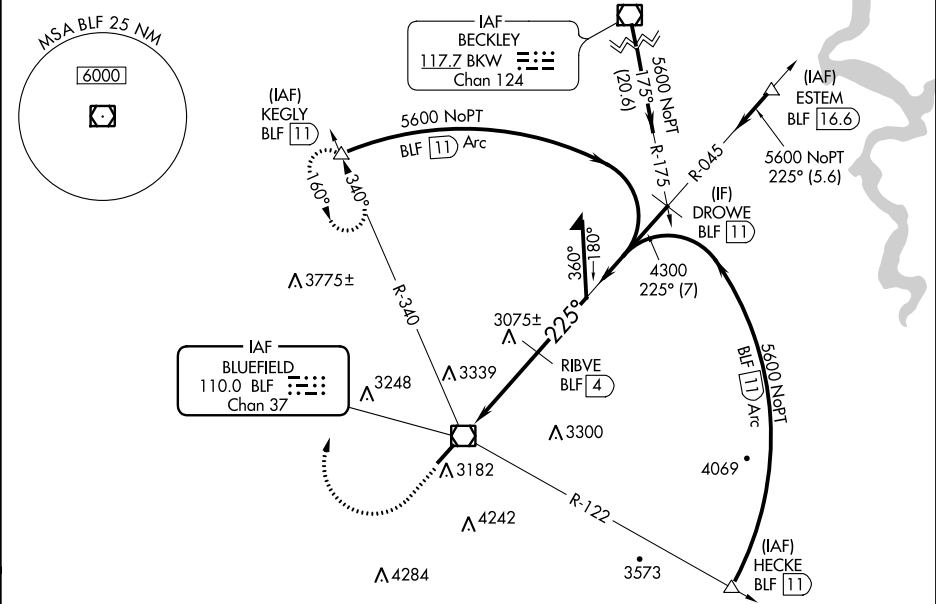
VOR RWY 23

MERCER COUNTY (BLF¹)

⚠ DME required. When local altimeter setting not received, use Beckley altimeter setting and increase all MDA 460 feet; increase S-23 visibility Cat A ¼ mile, Cat B ½ mile, Cat C 1 ½ mile, Cat D 1 ¼ mile; increase Circling visibility Cat A ¼ mile, Cat B ½ mile, Cat C 1 mile, Cat D ¾ mile. VDP NA when using Beckley altimeter setting. Circling NA southeast of Rwy 5-23.

MISSED APPROACH: Climb to 3800 then climbing right turn to 6000 on heading 020° and BLF R-340 to KEGLY/BLF 11 DME and hold.

ASOS	INDIANAPOLIS CENTER	CTAF
132.725	126.575 257.85	122.9 0



ELEV 2857 **D** TDZE 2857

3800

6000

↑

hdg 020°

BLF R-340

KEGLY

BLF VOR/DME

5600

VGSI and descent angles not coincident (VGSI Angle 3.00°/TCH 65°).

045°

225°

5100

4300

2.91°

TCH 55°

0.5 1.2 2.8 NM

CATEGORY	A	B	C	D
S-23	3440-1	583 (600-1)	3440-1 ½ 583 (600-1 ½)	3440-1 ¾ 583 (600-1 ¾)
CIRCLING	3440-1	583 (600-1)	3560-2 703 (800-2)	3560-2 ¼ 703 (800-2 ¼)

BLUEFIELD, WEST VIRGINIA
Amdt 5C 29MAR18

37°18'N - 81°12'W

MERCER COUNTY (BLF¹)
VOR RWY 23