

WAAS CH <b>61113</b> <b>W33A</b>	APP CRS <b>334°</b>	Rwy Idg <b>7003</b> TDZE <b>2281</b> Apt Elev <b>2284</b>
--	------------------------	---

# RNAV (GPS) RWY 33

## JOHN MURTHA JOHNSTOWN-CAMBRIA COUNTY (JST)

RNP APCH.

**T** Inop table does not apply to LNAV Cat D. For uncompensated Baro-VNAV systems, LNAV/VNAV NA below -19°C or above 54°C. For inop ALS increase LNAV/VNAV all Cats visibility to  $\frac{7}{8}$  SM and LNAV Cat C visibility to 1 SM.

MALSR

A5

T

**MISSED APPROACH:**  
Climb to 4800 direct  
LEDBE and hold.

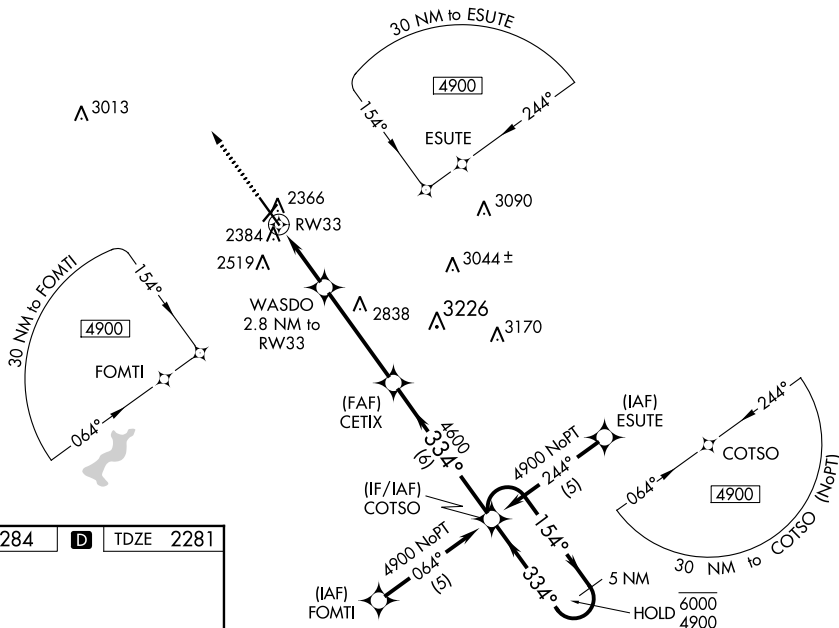
ATIS  
118.325

JOHNSTOWN APP CON ★  
121.2 299.2

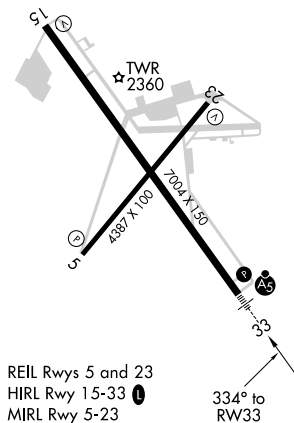
JOHNSTOWN TOWER ★  
125.75 (CTAF) **L**

GND CON  
**121.6**


CLNC DEL  
**126.85 235.775**

UNICOM  
122.95

ELEV 2284	<b>D</b>	TDZE 2281
-----------	----------	-----------



4800 ↑	LED BE	VGS1 and RNAV glidepath not coincident (VGS1 Angle 3.00°/TCH 53).		5 NM Holding Pattern
*LNAV only	*1 NM to RW33	WASDO 2.8 NM to RW33	CETIX 4600	COTSO
	RW33		334°	154° → 6000 ← 334° 4900
	1 NM	1.8 NM	4.2 NM	6 NM
		3200*	4600	
				GP 3.00° TCH 58

CATEGORY	A	B	C	D
LPV DA	2481-1½ 200 (200-½)			
RNAV/ VNAV DA	2552-½ 271 (300-½)			2552-¾ 271 (300-¾)
RNAV MDA	2640-½ 359 (400-½)	2640-⅝ 359 (400-⅝)		2640-1 359 (400-1)
 CIRCLING	2700-1 416 (500-1)	2880-1 596 (600-1)	2880-1½ 596 (600-1½)	3000-2¼ 716 (800-2¼)

JOHNSTOWN, PENNSYLVANIA  
Amdt 1A 15AUG19

JOHN MURTHA JOHNSTOWN-CAMBRIA COUNTY (JST)  
40°19'N-78°50'W      RNAV (GPS) RWY 33

RNAV (GPS) RWY 33