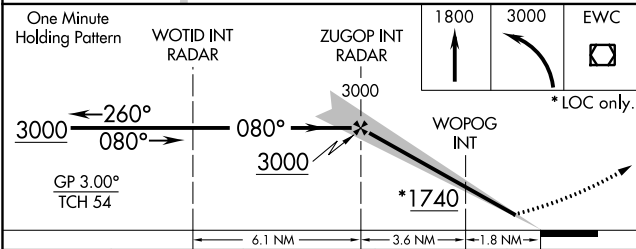
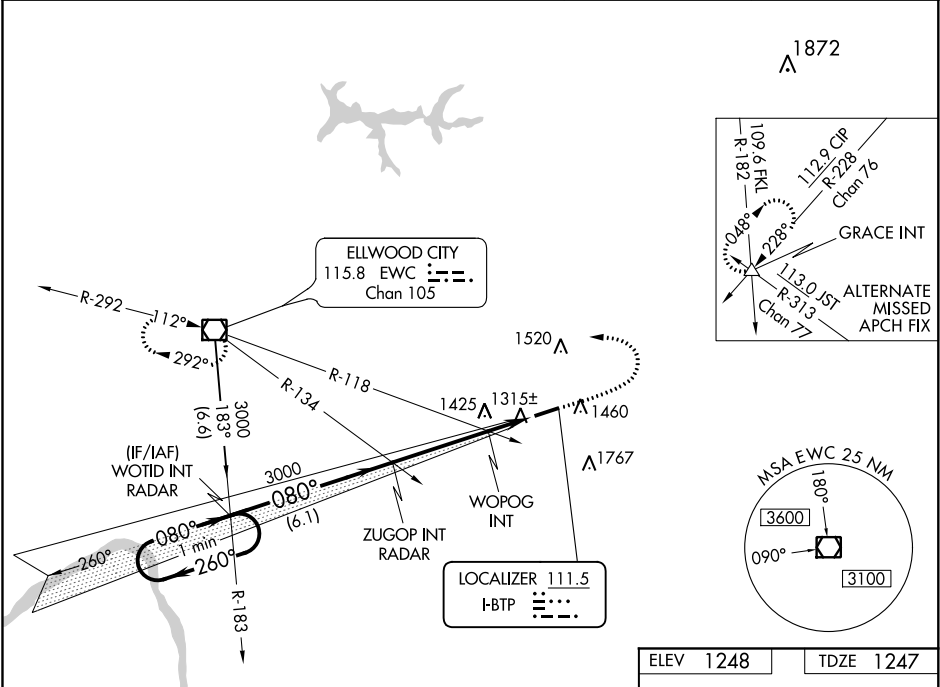


LOC I-BTP 111.5	APP CRS 080°	Rwy Idg TDZE Apt Elev	4801 1247 1248
---------------------------	------------------------	-----------------------------	---

ILS or LOC RWY 8
PITTSBURGH/BUTLER RGNL (BTP)

<div><div>▼</div><div>▲</div></div>	Rwy 8 helicopter visibility reduction below ¾ SM NA. For inop ALS increase S-LOC 8 WOPOG visibility minimums to 1 SM.			MALSF <div><div>24</div><div><div></div><div></div><div></div></div></div>	MISSED APPROACH: Climb to 1800 then climbing left turn to 3000 direct EWC VOR/DME and hold.	
	AWOS-3PT 121.450	PITTSBURGH APP CON 124.75 338.2	CLNC DEL 119.4		UNICOM 123.05	CTAF 123.05 0



CATEGORY	A	B	C	D
S-ILS 8		1497-¾	250 (300-¾)	
S-LOC 8	1740-¾	493 (500-¾)	1740-1½	493 (500-1½)
CIRCLING	1820-1	572 (600-1)	2080-2½ 832 (900-2½)	2080-2¾ 832 (900-2¾)
WOPOG FIX MINIMUMS (DUAL VOR RECEIVERS REQUIRED)				
S-LOC 8		1580-¾	333 (400-¾)	
CIRCLING	1820-1	572 (600-1)	2080-2½ 832 (900-2½)	2080-2¾ 832 (900-2¾)

ELEV 1248	TDZE 1247
REIL Rwy 26 HIRL Rwy 8-26 0	
FAF to MAP 5.4 NM	
Knots	60 90 120 150 180
Min:Sec	5:24 3:36 2:42 2:10 1:48

NE-4, 03 DEC 2020 to 31 DEC 2020

NE-4, 03 DEC 2020 to 31 DEC 2020