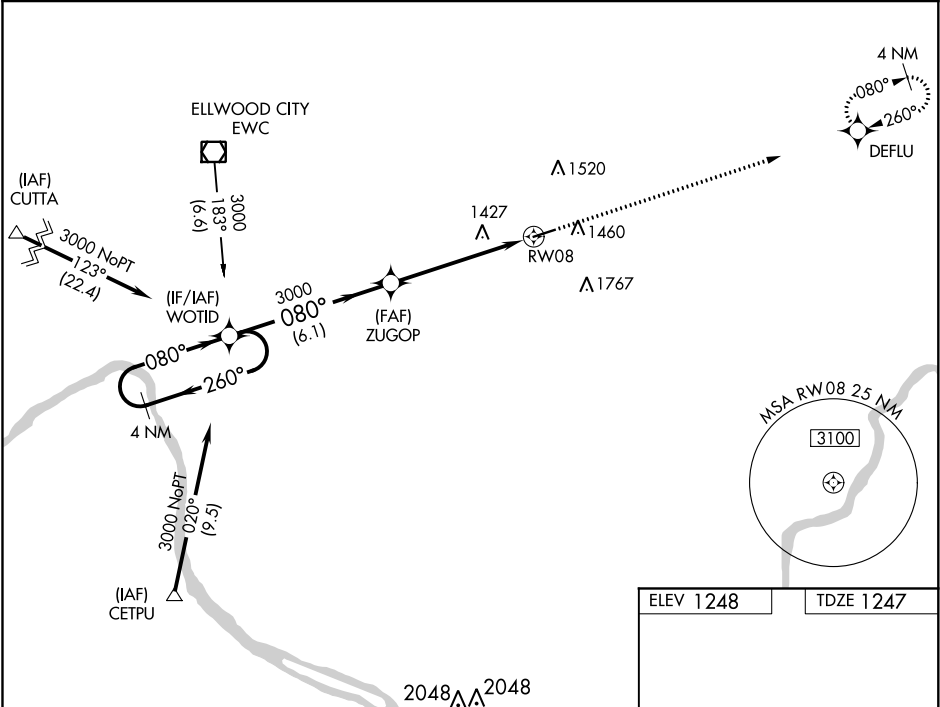


WAAS CH <b>56502</b> <b>W08A</b>	APP CRS <b>080°</b>	Rwy Idg TDZE Apt Elev	<b>4801</b> <b>1247</b> <b>1248</b>
--	------------------------	-----------------------------	---

RNAV (GPS) RWY 8

PITTSBURGH/BUTLER RGNL (BTP)

<div><div><div></div><div></div></div><div>For uncompensated Baro-VNAV systems, LNAV/VNAV NA below -17°C (2°F) or above 54°C (130°F). Rwy 8 helicopter visibility reduction below 3/4 SM NA. DME/DME RNP-0.3 NA.</div></div>			<div>MALSF</div> <div><div></div><div></div></div>	<div>MISSED APPROACH:</div> <div>Climb to 3100 direct DEFLU and hold.</div>
AWOS-3PT <b>121.450</b>	PITTSBURGH APP CON <b>124.75 338.2</b>	CLNC DEL <b>119.4</b>	UNICOM <b>123.05</b>	CTAF <b>123.05 0</b>



4 NM Holding Pattern

WOTID

ZUGOP

3100

DEFLU

3000 ← 260°

080° →

080° →

3000

\*1.3 NM to RW08

\*LNAV only

GP 3.00°

TCH 54

6.1 NM

4.1 NM

1.3

CATEGORY	A	B	C	D
LPV DA	1497-¾ 250 (300-¾)			
LNAV/VNAV DA	1604-1 357 (400-1)			
LNAV MDA	1680-¾ 433 (500-¾)		1680-1 433 (500-1)	
CIRCLING	1820-1 572 (600-1)		2080-2½ 832 (900-2½)	2080-2¾ 832 (900-2¾)

