

WAAS CH 42723 W13A	APP CRS 128°	Rwy Idg 4102 TDZE 402 Apt Elev 403
--	------------------------	---

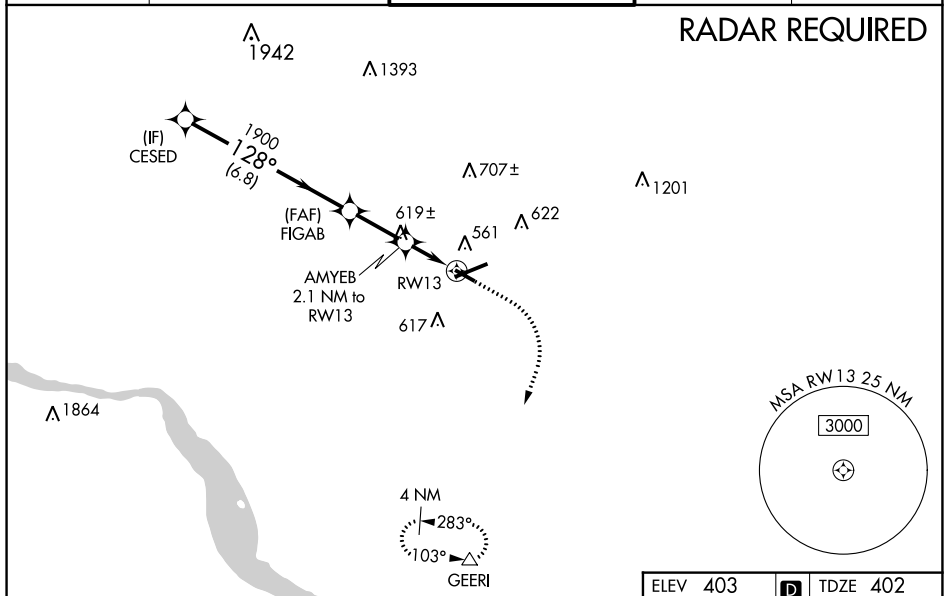
RNAV (GPS) RWY 13
LANCASTER (LNS)

**T
A**

Night landing: Rwy 13, 31 NA. Baro-VNAV NA when using Harrisburg Intl altimeter setting. For uncompensated Baro-VNAV systems, LNAV/VNAV NA below -1.5°C (5°F) or above 31°C (87°F). DME/DME RNP-0.3 NA. Helicopter visibility reduction below 1 SM NA. When local altimeter setting not received, use Harrisburg Intl altimeter setting and increase all DA 64 feet and all MDA 80 feet, increase LPV and LNAV/VNAV visibility all Cats ½, and LNAV and Circling Cats C and D ¼.

MISSED APPROACH:
Climb to 900 then
climbing right turn
to 3000 direct
GEERJ and hold

ATIS 125.675	HARRISBURG APP CON 126.45 281.525	LANCASTER TOWER ★ 120.9 (CTAF) 0 251.1	GND CON 121.8	UNICOM 122.95
------------------------	---	--	-------------------------	-------------------------



VGSI and RNAV glidepath not coincident
(VGSI Angle 3.00/TCH 40).

CESED 3000

128°

FIGAB 1900

AMYEB 2.1 NM to RW13

1900

*1140

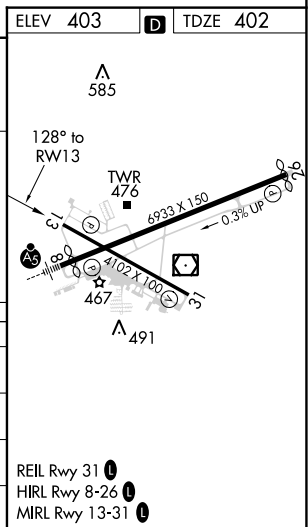
RW13

6.8 NM 2.3 NM 2.1 NM

GP 3.10° TCH 60

* LNAV only

CATEGORY	A	B	C	D
LPV DA		687-1	285 (300-1)	
LNAV/VNAV DA		894-1 ⁵ / ₈	492 (500-1 ⁵ / ₈)	
LNAV MDA	880-1	478 (500-1)	880-1 ³ / ₈	478 (500-1 ³ / ₈)
CIRCLING	940-1	537 (600-1)	940-1 ¹ / ₂ 537 (600-1 ¹ / ₂)	1060-2 657 (700-2)



RNAV (GPS) RWY 13