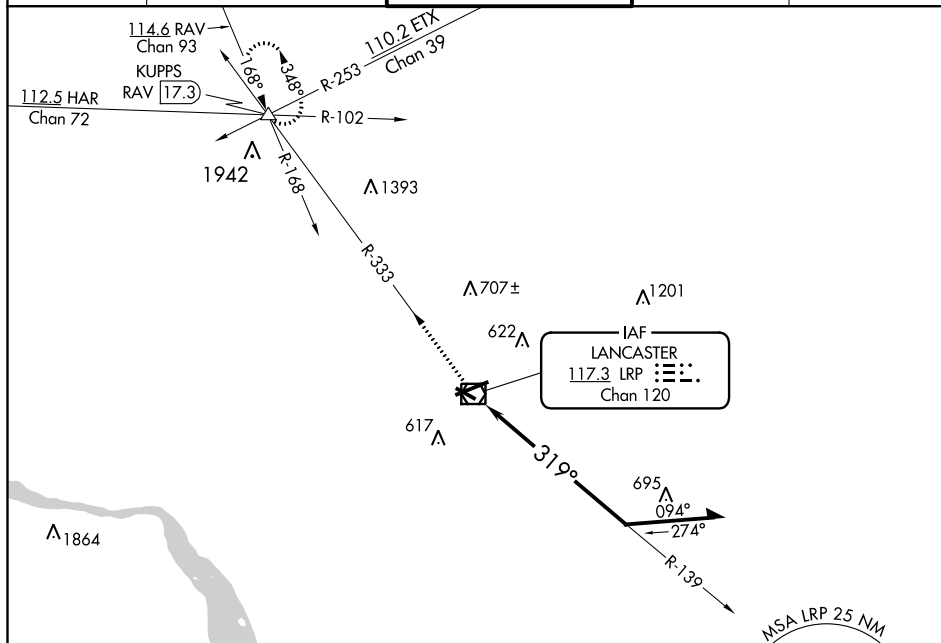


VOR RWY 31
LANCASTER (LNS)

MISSED APPROACH: Climb to 3000 via LRP VOR/DME R-333 to KUPPS INT/RAV 17.3 DME and hold.

ATIS 125.675	HARRISBURG APP CON 126.45 281.525	LANCASTER TOWER ★ 120.9 (CTAF) 0 251.1	GND CON 121.8	UNICOM 122.95
------------------------	---	--	-------------------------	-------------------------



ELEV 403	D	TDZE 403
----------	----------	----------

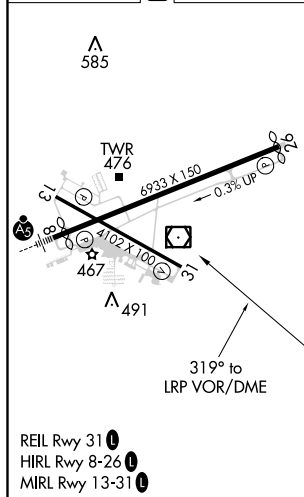


Diagram illustrating a VOR/DME station with a 139° bearing to a 2500 ft obstacle and a 319° bearing to a 2500 ft obstacle. The diagram also shows a 3000 ft altitude marker, LRP R-333, KUPPS, and a 10 NM radius.

NE-4, 03 DEC 2020 to 31 DEC 2020