

VOR/DME LRP 117.3 Chan 120	APP CRS 090°	Rwy Idg 6118 TDZE 399 Apt Elev 403
--	------------------------	---

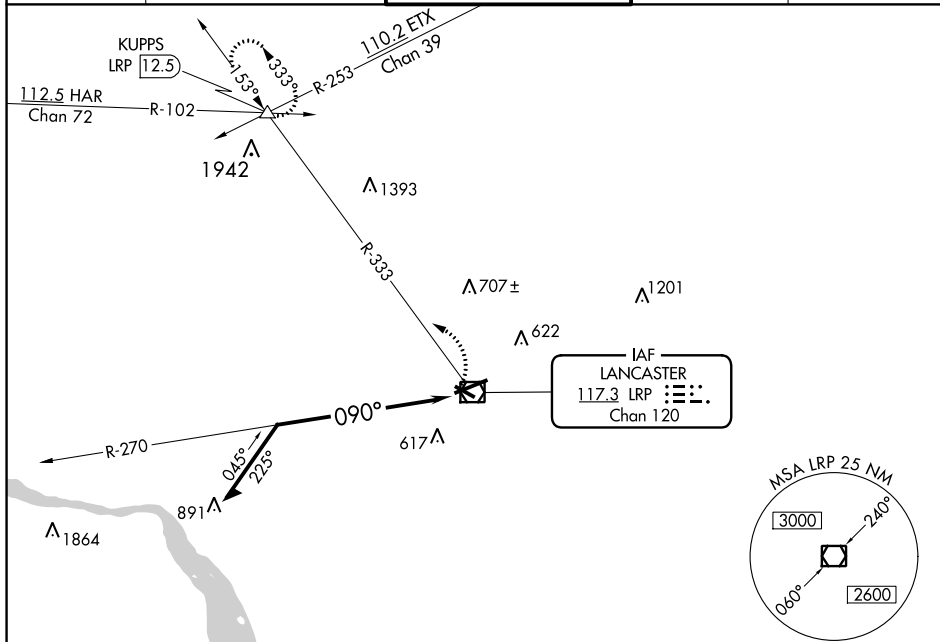
VOR RWY 8
LANCASTER (LNS)

T Night landing: Rwy 13, 31 NA. Inop table does not apply.
A When local altimeter setting not received, use Harrisburg Intl altimeter setting and increase all MDA 80 feet.

MALSR

MISSED APPROACH: Climbing left turn to 3000 via LRP VOR/DME R-333 to KUPPS INT/LRP 12.5 DME and hold.

ATIS 125.675	HARRISBURG APP CON 126.45 281.525	LANCASTER TOWER ★ 120.9 (CTAF) 0 251.1	GND CON 121.8	UNICOM 122.95
------------------------	---	--	-------------------------	-------------------------



NE-4, 03 DEC 2020 to 31 DEC 2020

Diagram illustrating the Kupps VOR/DME station and its associated procedures. The station is located 2900 feet above the ground. The diagram shows a VOR/DME station at Kupps with a frequency of 113.1 MHz and a DME channel of 100. The station is located 2900 feet above the ground. The diagram includes a table of altitudes for various aircraft categories (S-8, Circling, etc.) and a table of altitudes for various aircraft categories (S-8, Circling, etc.).

CATEGORY	A	B	C	D
S-8	1400-1¼ 1001 (1000-1½)	1400-1½ 1001 (1000-1½)	1400-3	1001 (1000-3)
CIRCLING	1400-1¼ 997 (1000-1½)	1400-1½ 997 (1000-1½)	1400-3	997 (1000-3)