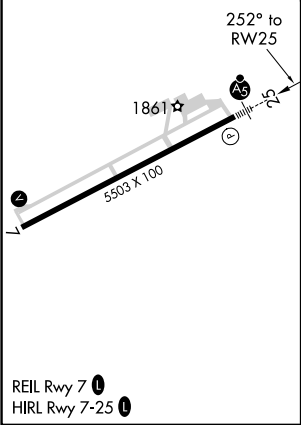
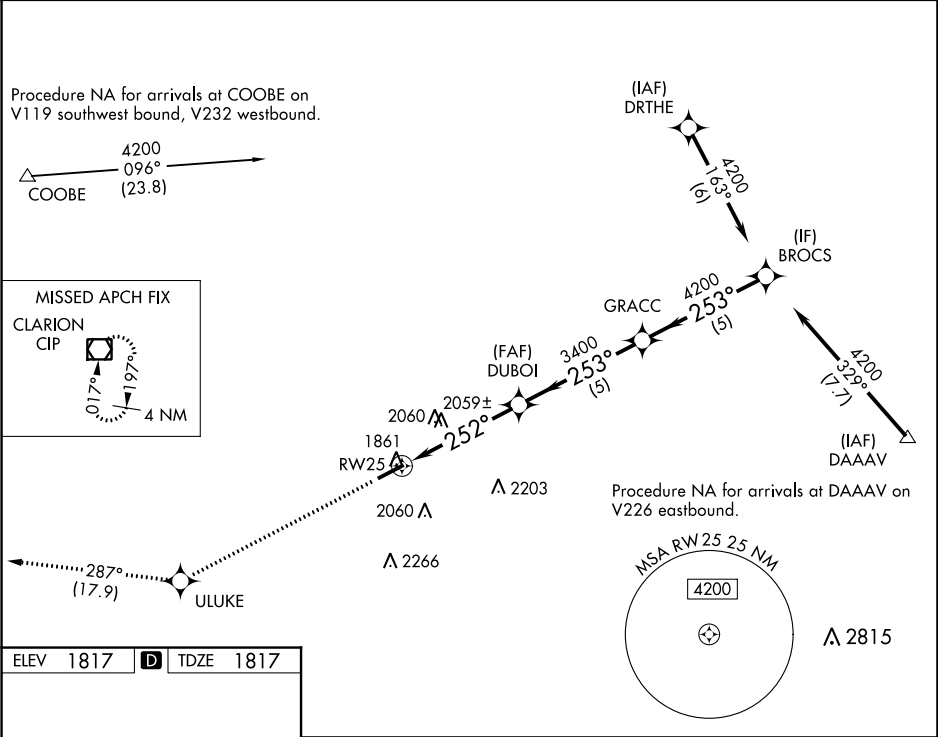


WAAS CH 97407 W25A	APP CRS 252°	Rwy Idg TDZE Apt Elev	5503 1817 1817
--	------------------------	-----------------------------	---

RNAV (GPS) RWY 25

DUBOIS RGNL (DUJ)

RNP APCH.		MALSR	MISSED APPROACH: Climb to 4000 direct ULUKE and on track 287° to CIP VOR/DME and hold.
<div><div></div><div>For uncompensated Baro-VNAV systems, LNAV/VNAV NA below -20°C or above 54°C. For inop ALS increase LNAV Cat C/D visibility to 1 3⁄8 SM.</div></div>		<div><div></div></div>	
ASOS 119.025	CLEVELAND CENTER 126.725 291.65	UNICOM 123.0 (CTAF) 0	



4000	ULUKE	CIP				
<div></div>	<div>tr 287°</div>	<div></div>	DUBOI	GRACC	BROCS	
*LNAV only:			3400	253°	4200	GP 3.00° TCH 57
<div><div></div><div>1.4</div><div>3.3 NM</div><div>5 NM</div><div>5 NM</div></div>						
CATEGORY	A	B	C	D		
LPV DA	2017-1⁄2		200 (200-1⁄2)			
LNAV/VNAV DA	2209-3⁄4		392 (400-3⁄4)			
LNAV MDA	2320-1⁄2 503 (600-1⁄2)		2320-1 503 (600-1)			
C CIRCLING	2320-1 503 (600-1)	2360-1 543 (600-1)	2380-1 1⁄2 563 (600-1 1⁄2)	2620-2 1⁄2 803 (900-2 1⁄2)		