

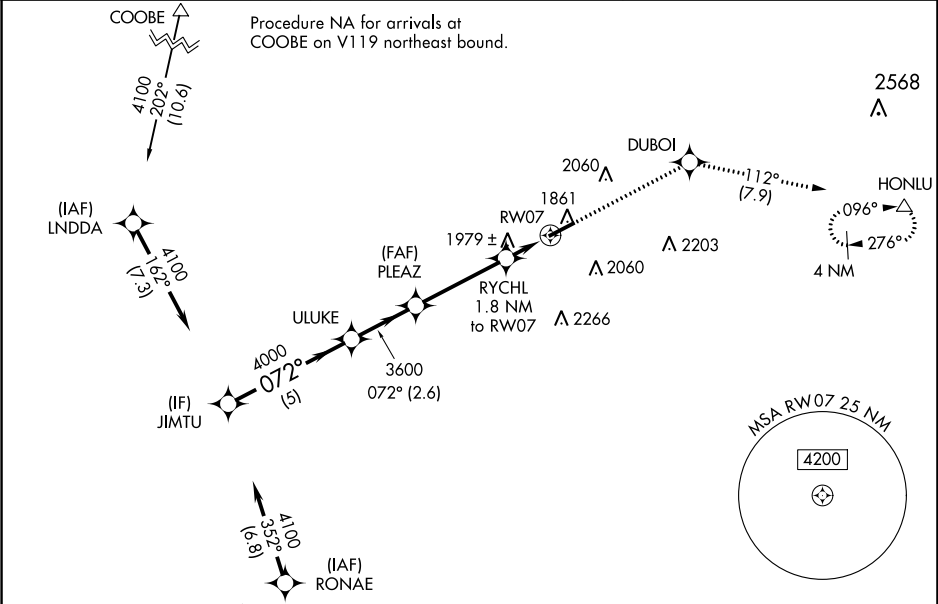
WAAS CH 82116 W07A	APP CRS 072°	Rwy Idg TDZE 1817 Apt Elev 1817
--	------------------------	---

RNAV (GPS) RWY 7

DUBOIS RGNL (DUJ)

RNP APCH.	MISSED APPROACH: Climb to 4200 direct DUBOI and on track 112° to HONLU and hold.
<div><div><div></div><div></div></div><div>For uncompensated Baro-VNAV systems, LNAV/VNAV NA below -20°C or above 54°C.</div></div>	

ASOS 119.025	CLEVELAND CENTER 126.725 291.65	UNICOM 123.0 (CTAF) 0
------------------------	---	---------------------------------



ELEV 1817		TDZE 1817	
VGSi and RNAV glidepath not coincident (VGSi Angle 3.00/TCH 28).			
JIMTU	ULUKE	PLEAZ	HONLU
4000	4000	3600	tr 112°
GP 3.00°		RYCHL 1.8 NM to RW07	*LNAV only.
TCH 45		*2420	
5 NM		2.6 NM	3.7 NM
A		B	C
CATEGORY	D		
LPV DA	2017-3/4 200 (200-3/4)		
LNAV/VNAV DA	2160-1 343 (400-1)		
LNAV MDA	2240-1 423 (500-1) 2240-1 1/4 423 (500-1 1/4)		
CIRCLING	2320-1 503 (600-1) 2360-1 543 (600-1) 2380-1 1/2 563 (600-1 1/2) 2620-2 1/2 803 (900-2 1/2)		