

LOC I-MQS	APP CRS	Rwy Idg	5400
108.5	293°	TDZE	660
		Apt Elev	660

ILS or LOC RWY 29

CHESTER COUNTY G O CARLSON (MQS)

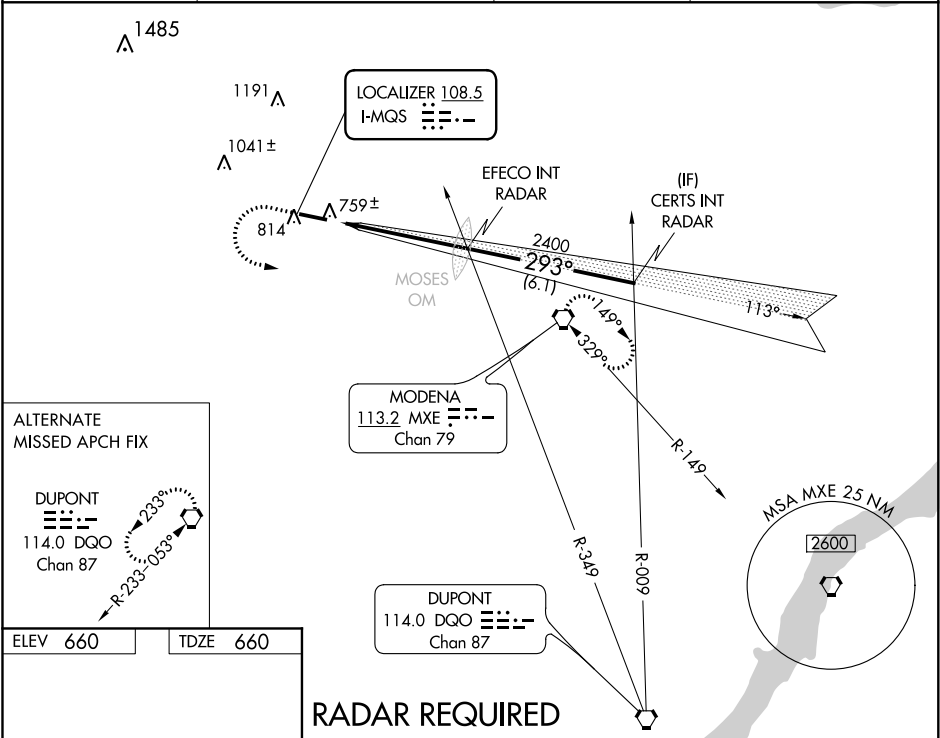
⚠

⚠

Rwy 29 helicopter visibility reduction below ¾ SM NA. When local altimeter setting not received, use Pottstown-Limerick altimeter setting and increase all DA 98 feet, and all MDA 100 feet, S-ILS 29 visibility ¼ mile all Cats, S-LOC 29 visibility Cats C and D ¼ mile, and Circling visibility Cat C and D ¼ mile.

MISSED APPROACH: Climb to 1300 then climbing left turn to 2400 direct MXE VORTAC and hold.

AWOS-3	PHILADELPHIA APP CON	CLNC DEL	UNICOM
126.25	124.35 319.15	125.6	122.7 (CTAF) 0



ELEV 660

TDZE 660

HIRL Rwy 11-29 0

REIL Rwy 11-29 0

FAF to MAP 5.2 NM

Knots	60	90	120	150	180
Min:Sec	5:12	3:28	2:36	2:05	1:44

CATEGORY	A	B	C	D
S-ILS 29	919-1 259 (300-1)			
S-LOC 29	1040-1 380 (400-1)			1040-1¼ 380 (400-1¼)
CIRCLING	1140-1 480 (500-1)		1220-1½ 560 (600-1½)	1260-2 600 (600-2)