

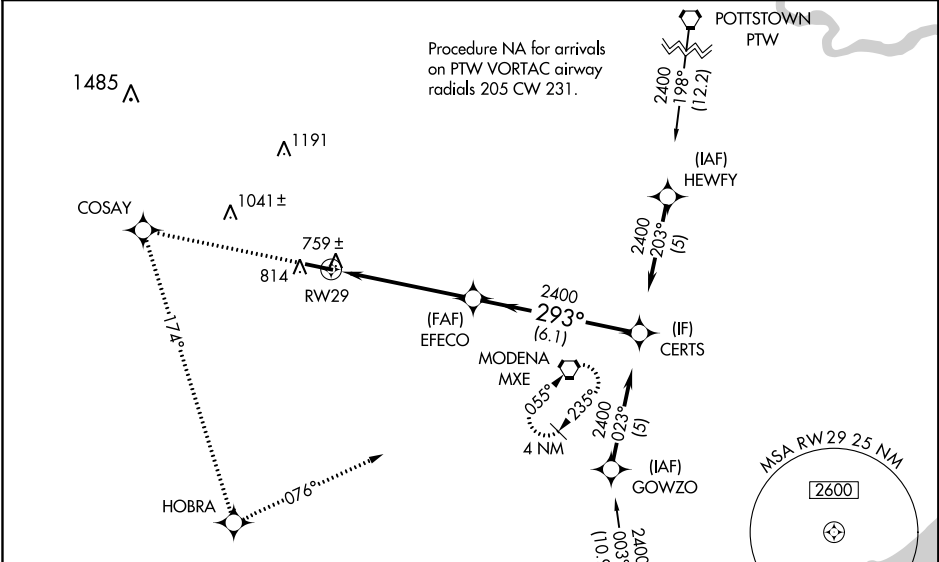
WAAS CH 82506 W29A	APP CRS 293°	Rwy Idg TDZE Apt Elev	5400 660 660
--	------------------------	-----------------------------	---

RNAV (GPS) RWY 29
CHESTER COUNTY G O CARLSON (MQS)

Baro-VNAV NA when using Heritage Field altimeter setting. For uncompensated Baro-VNAV systems, LNAV/VNAV NA below -16°C (4°F) or above 47°C (116°F). DME/DME RNP-0.3 NA. When local altimeter setting not received, use Heritage Field altimeter setting and increase all DA 98 feet and all MDA 100 feet, LPV visibility ¼ mile all Cats, LNAV/VNAV visibility ¼ mile all Cats, LNAV visibility Cats C and D ¼ mile, and Circling visibility Cat C and D ¼ mile. VDP NA when using Heritage Field altimeter setting. Rwy 29 helicopter visibility reduction below ¾ SM NA.

MISSED APPROACH:
Climb to 2400 direct COSAY and left turn on 174° track to HOBRA and left turn on 076° track to MXE VORTAC and hold.

AWOS-3 126.25	PHILADELPHIA APP CON 124.35 319.15	CLNC DEL 125.6	UNICOM 122.7 (CTAF) 0
-------------------------	--	--------------------------	---------------------------------



ELEV 660 TDZE 660

Procedure NA for arrivals on DGO VORTAC airway radials 309 CW 053.

2400 COSAY 174° tr HOBRA 076° tr MXE

* LNAV only

1 NM 4.3 NM 6.1 NM

GP 3.00° TCH 56

HIRL Rwy 11-29 0

REIL Rwy 11-29 0

CATEGORY	A	B	C	D
LPV DA	938-1		278 (300-1)	
LNAV/VNAV DA	1029-1¼		369 (400-1¼)	
LNAV MDA	1020-1		360 (400-1)	1020-1¼ 360 (400-1¼)
CIRCLING	1140-1	480 (500-1)	1220-1½ 560 (600-1½)	1260-2 600 (600-2)

NE-4, 03 DEC 2020 to 31 DEC 2020

NE-4, 03 DEC 2020 to 31 DEC 2020