

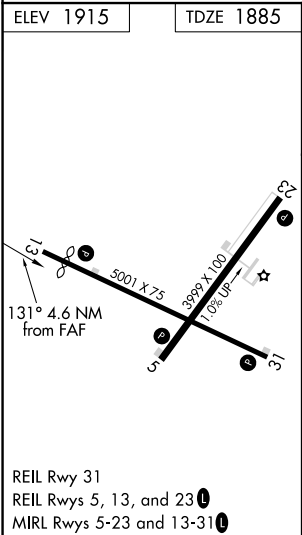
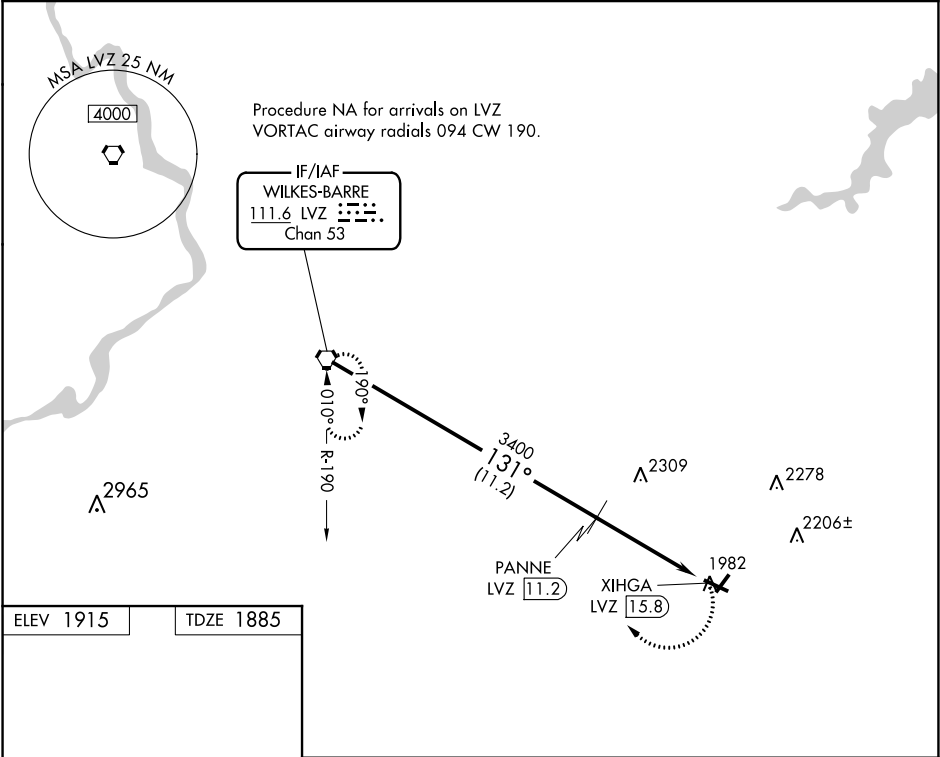
VORTAC LVZ	APP CRS	Rwy Idg	4500
111.6	131°	TDZE	1885
Chan 53		Apt Elev	1915

VOR/DME RWY 13

POCONO MOUNTAINS MUNI (MPO)

<div><div>▼</div><div>▲</div></div> <div>Circling Rwy 23 NA at night. Helicopter visibility reduction below $\frac{3}{4}$ SM NA. When local altimeter setting not received, use Wilkes-Barre/Scranton altimeter setting and increase all MDA 180 feet; increase S-13 Cat B and Circling Cat B visibility $\frac{1}{4}$ mile, S-13 Cats C/D visibility $\frac{3}{4}$ mile, and Circling Cats C/D visibility $\frac{1}{2}$ mile.</div>	MISSED APPROACH: Climbing right turn to 4000 direct LVZ VORTAC and hold.
--	--

ASOS 120.275	WILKES-BARRE APP CON 126.3 256.7	CLNC DEL 125.3	UNICOM 122.7 (CTAF) 0
------------------------	--	--------------------------	---------------------------------



LVZ VORTAC				4000	LVZ
4000				131°	PANNE LVZ 11.2
3400					
11.2 NM				3.03°	XIHGA LVZ 15.8
4.6 NM				TCH 40	
CATEGORY	A	B	C	D	
S-13	2500-1	615 (600-1)	2500-1¾	615 (600-1¾)	
CIRCLING	2500-1	585 (600-1)	2600-2 685 (700-2)	2660-2½ 745 (800-2½)	

NE-4, 03 DEC 2020 to 31 DEC 2020

NE-4, 03 DEC 2020 to 31 DEC 2020