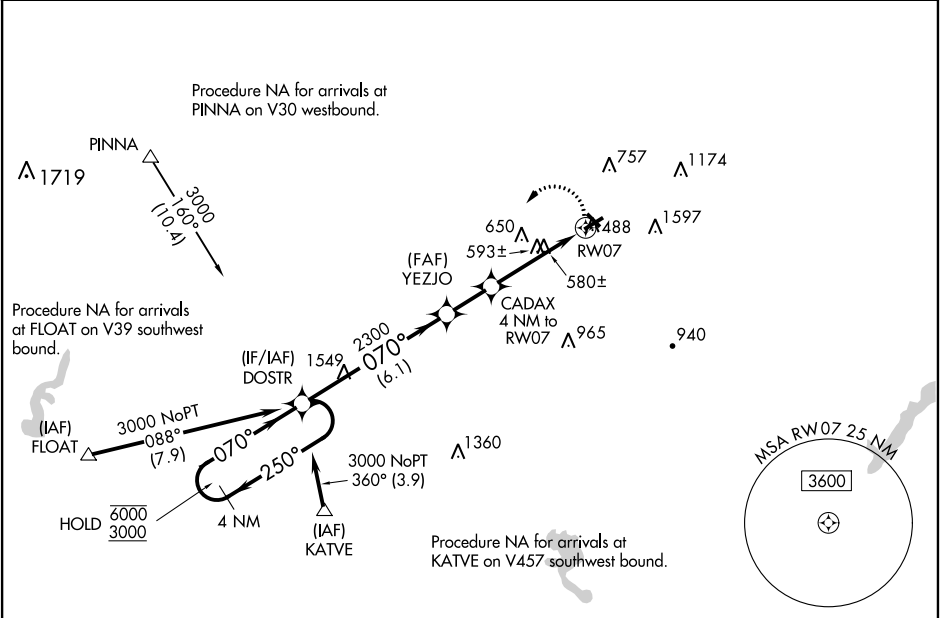


WAAS CH 61224 W07A	APP CRS 070°	Rwy Idg 3950 TDZE 390 Apt Elev 399
----------------------------------------	------------------------	---------------------------------------------------------------

RNAV (GPS) RWY 7

ALLENTOWN QUEEN CITY MUNI (XLL)

RNP APCH.			MISSED APPROACH: Climbing left turn to 3000 direct DOSTR and hold.
Circling NA south of Rwy 7 and 25. Rwy 7 helicopter visibility reduction below ¾ SM NA. Circling Rwy 15 NA at night.			
AWOS-3 127.875	ALLENTOWN APP CON 119.65 124.45 351.8	CLNC DEL 118.9	UNICOM 122.7 (CTAF) 0



4 NM Holding Pattern		Visual Segment - Obstacles.		3000	DOSTR
CATEGORY	A	B	C	D	
LP MDA	940-1	550 (600-1)	940-1½ 550 (600-1½)	NA	
LNAV MDA	1060-1	670 (700-1)	1060-1½ 670 (700-1½)	NA	
CIRCLING	1060-1	661 (700-1)	1060-1½ 661 (700-1½)	NA	

