

WAAS
CH **61309**
W24A

APP CRS
244°

Rwy Idg
TDZE
Apt Elev

6701
1218
1231

RNAV (GPS) RWY 24
UNIVERSITY PARK (UNV)

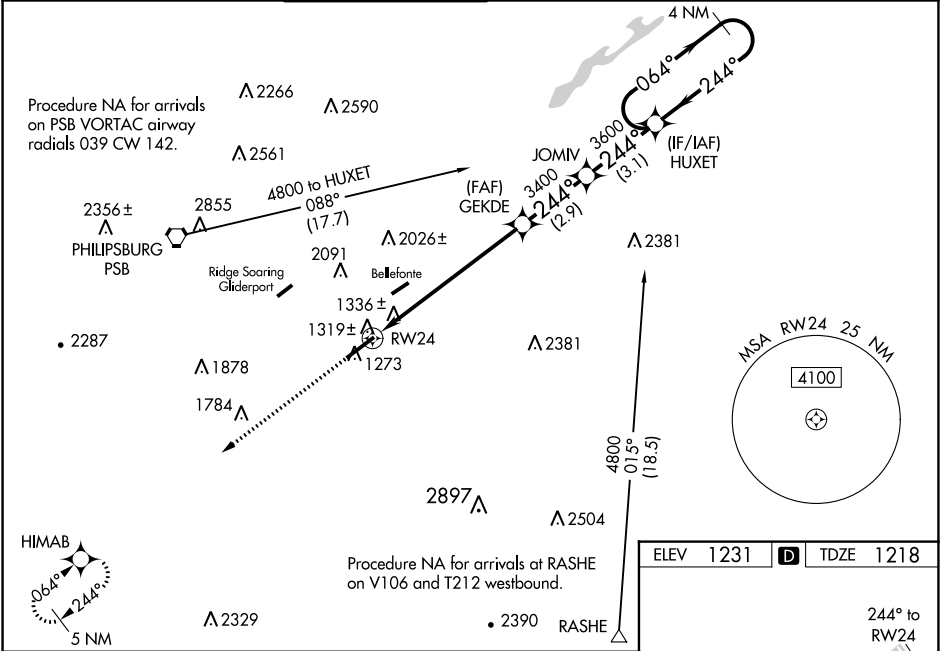
RNP APCH.

For uncompensated Baro-VNAV systems, LNAV/VNAV NA below -17°C (2°F) or above 54°C (130°F). Baro-VNAV and VDP NA when using Clearfield altimeter setting. When local altimeter setting not received, use Clearfield altimeter setting: increase LPV DA to 1524 feet and LNAV/VNAV DA to 1725 feet and visibility LNAV/VNAV all Cats ¼ SM; increase all MDAs 120 feet and visibility LNAV Cats C/D ¾ SM and Circling Cat C ½ SM. For inop ALS, increase LNAV/VNAV all Cats visibility to 1 ½ SM. For inop ALS when using Clearfield altimeter setting, increase LPV all Cats visibility to ¾ SM and LNAV/VNAV all Cats to 1 ½ SM. Circling NA NW of Rwy 6-24.

MALSR

MISSED APPROACH:
Climb to 4100 direct
HIMAB and hold.

ATIS 127.65	NEW YORK CENTER 134.8 338.3	UNIVERSITY PARK ★ 128.475 (CTAF)	GND CON 119.625	CLNC DEL 119.625	CLNC DEL 118.55 (When twr closed)	UNICOM 122.95
-----------------------	---------------------------------------	--	---------------------------	----------------------------	--	-------------------------



4100 HIMAB

*LNAV only

*1.2 NM to RWY24

RWY24

1.2 NM 5.6 NM 2.9 NM 3.1 NM

CATEGORY	A	B	C	D
LPV DA		1418-1/2	200 (200-1/2)	
LNAV/VNAV DA		1619-3/4	401 (400-3/4)	
LNAV MDA	1640-1/2	422 (500-1/2)	1640-3/4	422 (500-3/4)
CIRCLING	1640-1 409 (500-1)	1700-1 469 (500-1)	1940-2 709 (800-2)	2580-3 1349 (1400-3)

JOMIV

HUXET

4 NM Holding Pattern

GEKDE

3400

3600

4000

GP 3.00° TCH 55

ELEV 1231 TDZE 1218

TWR

6701 X 150

REIL Rwy 6

HIRL Rwy 6-24