

WAAS CH <b>97639</b> <b>W17A</b>	APP CRS <b>170°</b>	Rwy Idg TDZE <b>456</b> Apt Elev <b>464</b>
--	------------------------	---

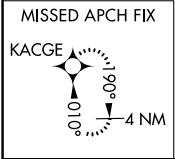
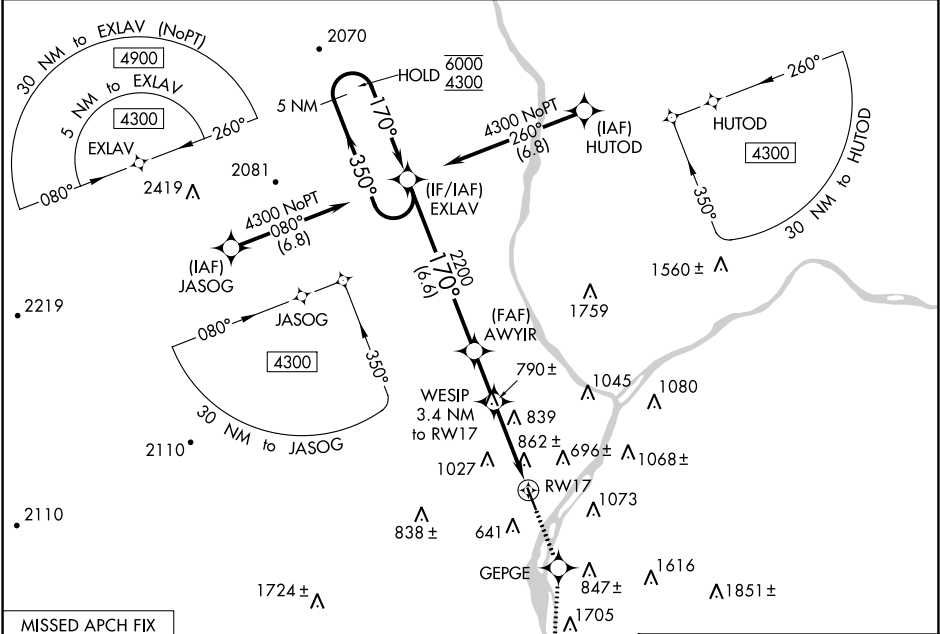
RNAV (GPS) RWY 17  
PENN VALLEY (SE/G)

RNP APCH

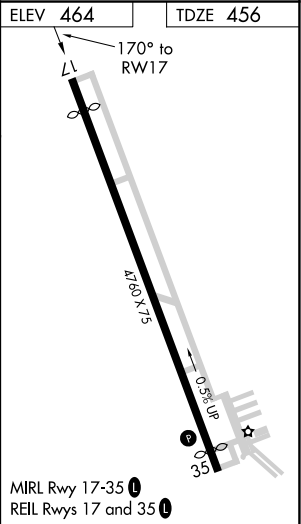
Rwy 17 helicopter visibility reduction below 1 SM NA. Straight-in Rwy 17 NA at night, Circling Rwy 17 NA at night. When Circling to Rwy 35 at night, operational VGSI required, remain on or above VGSI glidepath until threshold.

MISSED APPROACH: Climb to 3900 direct GEPGE and on track 194° to KACGE and hold, continue climb-in-hold to 3900.

ASOS <b>123.975</b>	HARRISBURG APP CON <b>118.25 269.45</b>	UNICOM <b>122.7 (CTAF) 0</b>
------------------------	--	---------------------------------



5 NM Holding Pattern		EXLAV	3900	GEPGE	KACGE
6000 ← 350°		4300 → 170°	AWYIR	WESIP 3.4 NM to RWY17	RWY17
2200		3.00°	TCH 40	1580	
6.6 NM		2 NM	3.4 NM		
CATEGORY	A	B	C	D	
LP MDA	1200-1 744 (800-1)	1200-1¼ 744 (800-1¼)	1200-2 744 (800-2)		
UNAV MDA	1260-1 804 (800-1)	1260-1¼ 804 (800-1¼)	1260-2½ 804 (800-2½)		
CIRCLING	1400-1¼	936 (1000-1¼)	1420-3 956 (1000-3)	1600-3 1136 (1200-3)	



NE-4, 03 DEC 2020 to 31 DEC 2020

NE-4, 03 DEC 2020 to 31 DEC 2020