

WAAS CH 97539 W29A	APP CRS 286°	Rwy Idg TDZE 1419 Apt Elev 1419	5502
--	------------------------	---	-------------

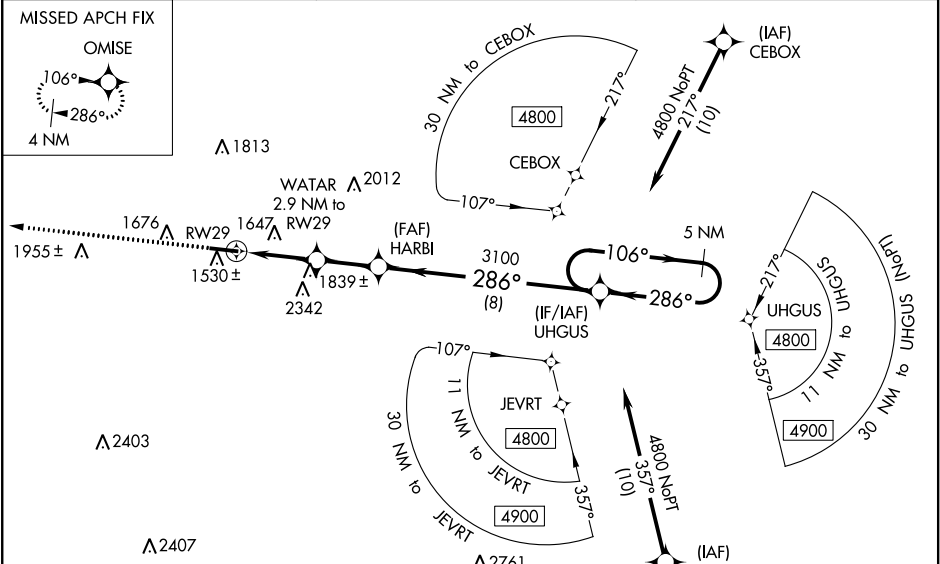
RNAV (GPS) RWY 29

INDIANA COUNTY/JIMMY STEWART FLD (IDI)

⚠ For uncompensated Baro-VNAV systems, LNAV/VNAV NA below -17°C (2°F) or above 54°C (130°F). Baro-VNAV and VDP NA when using Allegheny County altimeter setting. DME/DME RNP-0.3 NA. Rwy 29 helicopter visibility reduction below ¾ SM NA. When local altimeter setting not received, use Allegheny County altimeter setting and increase LPV DA to 1788 feet, LNAV/VNAV DA to 2154 feet; increase visibility LPV all Cats to 1¼ SM. Increase all MDA 120 feet and all Cat A and B visibilities to 1¼ SM and LNAV Cat C and D visibilities to 2½ SM.

MISSED APPROACH:
Climb to 3600 direct OMISE and hold.

AWOS-3 126.625	JOHNSTOWN APP CON★ 121.2 299.2	UNICOM 122.8 (CTAF) 0
--------------------------	--	--



ELEV 1419	TDZE 1419
------------------	------------------

REIL Rwy 11 **0**
HIRL Rwy 11-29 **0**

0.9% UP - 5502 X 100

286° to RW29

A 1640±

3600 OMISE

*LNAV only.

WATER 2.9 NM to RW29

HARBI 3100

UHGUS 5 NM Holding Pattern

GP 3.00° TCH 45

2 NM - 0.9 - 2.2 NM - 8 NM

CATEGORY	A	B	C	D
LPV DA	1669-¾ 250 (300-¾)			
LNAV/VNAV DA	2035-2½ 616 (700-2½)			
LNAV MDA	2100-1 681 (700-1)		2100-2 681 (700-2)	
C CIRCLING	2120-1 701 (800-1)	2180-1 761 (800-1)	2660-3 1241 (1300-3)	

NE-4, 03 DEC 2020 to 31 DEC 2020

NE-4, 03 DEC 2020 to 31 DEC 2020