

WAAS CH 63014 W29A	APP CRS 290°	Rwy Idg TDZE Apt Elev	4599 1724 1729
--	------------------------	-----------------------------	---

RNAV (GPS) RWY 29

SCHUYLKILL COUNTY/JOE ZERBEY (Z.ER)

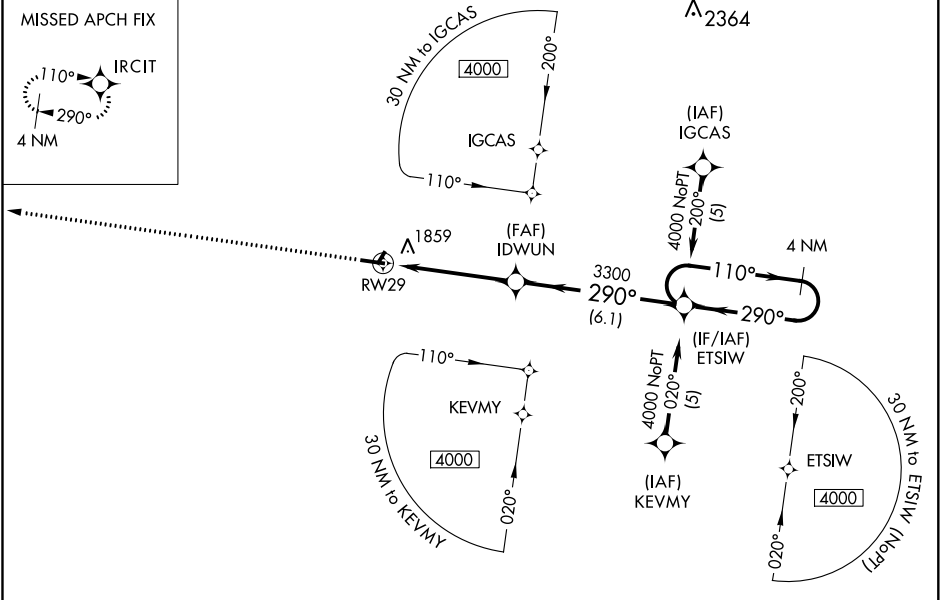
⚠

NA

Baro-VNAV NA when using Selinsgrove altimeter setting. For uncompensated Baro-VNAV systems, LNAV/VNAV NA below -18°C (0°F) or above 45°C (113°F). DME/DME RNP-0.3 NA. VDP NA when using Selinsgrove altimeter setting. When local altimeter setting not received, use Selinsgrove altimeter setting and increase all DA 261 feet and all MDA 280 feet. Increase LPV and LNAV/VNAV all Cats and LNAV Cat C and Cat D visibility 1 mile and increase circling Cat C ½ mile and Cat D ¾ mile. Circling NA to Rwy's 4 and 22.

MISSED APPROACH:
Climb to 4000 direct IRCIT and hold.

AWOS-3 127.575	HARRISBURG APP CON 118.25 269.45	UNICOM 123.075 (CTAF) 📶
--------------------------	--	--



ELEV 1729	TDZE 1724
------------------	------------------

4000

↑

IRCIT

*LNAV only.

22

222 X 140

0.5% UP

4599 X 75

0.5% UP

290° to RWY29

IDWUN

3300

290°

ETSIW

4000

110°

290°

4 NM Holding Pattern

RWY29

1.2 NM

3.6 NM

6.1 NM

GP 3.00°

TCH 40

CATEGORY	A	B	C	D
LPV DA	1924-¾		200 (200-¾)	
LNAV/VNAV DA	2144-1½		420 (500-1½)	
LNAV MDA	2120-1		396 (400-1)	
CIRCLING	2160-1 431 (500-1)	2180-1 451 (500-1)	2180-1½ 451 (500-1½)	2280-2 551 (600-2)

REIL Rwy's 11 and 29 **📶**

MIRL Rwy 11-29 **📶**